

# Gins/Booms

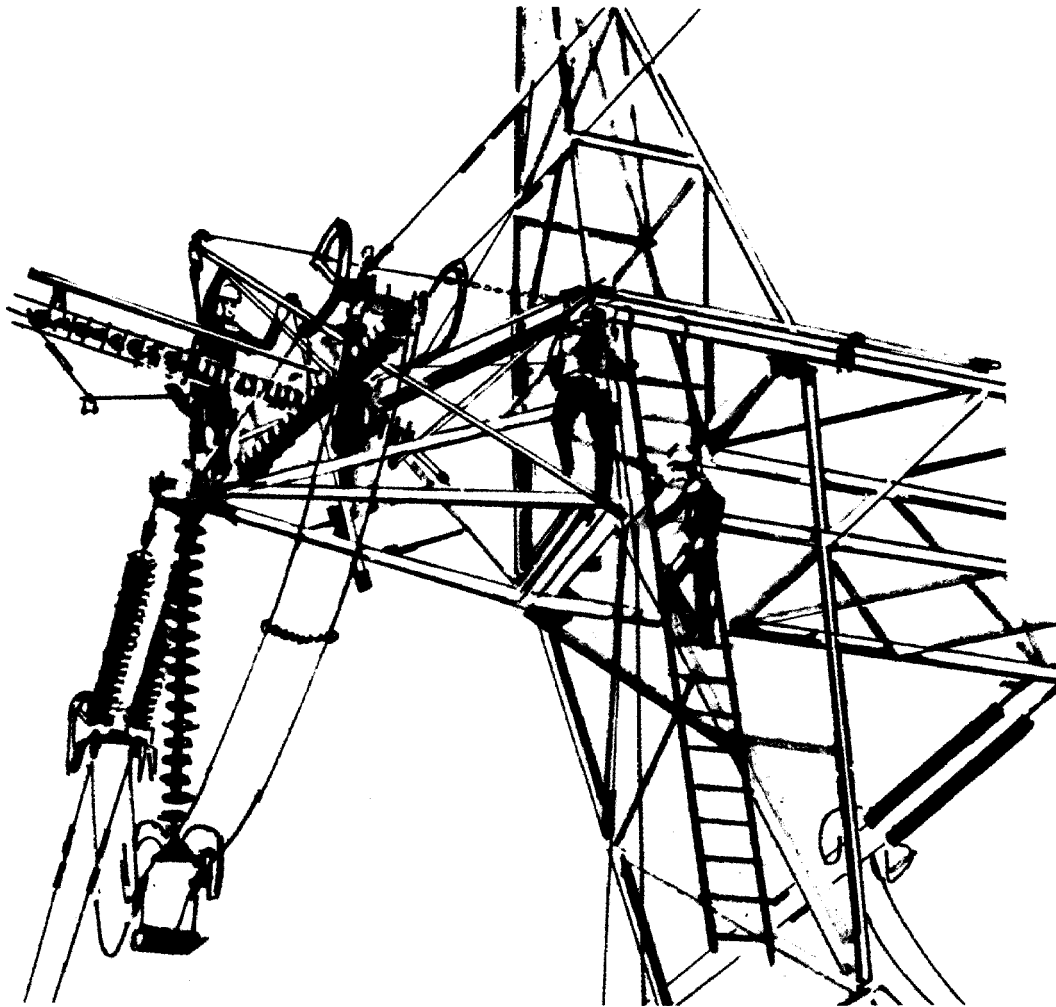
## Warranty - Material

Hubbell Power Systems, Inc. warrants all products sold by it to be merchantable (as such term is defined in the Uniform Commercial Code) and to be free from defects in material and workmanship. Buyer must notify the Company promptly of any claim under this warranty. The Buyer's exclusive remedy for breach of this warranty shall be the repair or replacement, F.O.B. factory, at the Company's option, of any product defective under the warranty which is returned to the Company within one year from the date of shipment. NO OTHER WARRANTY, WHETHER EXPRESS OR ARISING BY OPERATION OF LAW, COURSE OF DEALING, USAGE OF TRADE OR OTHERWISE IMPLIED, SHALL EXIST IN CONNECTION WITH THE COMPANY'S PRODUCTS OR ANY SALE OR USE THEREOF. The Company shall in no event be liable for any loss of profits or any consequential or special damages incurred by Buyer. The Company's warranty shall run only to the first Buyer of a product from the Company, from the Company's distributor, or from an original equipment manufacturer reselling the Company's product, and is non-assignable and non-transferable and shall be of no force and effect if asserted by any person other than such first Buyer. This warranty applies only to the use of the product as intended by Seller and does not cover any misapplication or misuse of said product.

## Warranty - Application

Hubbell Power Systems, Inc. does not warrant the accuracy of and results from product or system performance recommendations resulting from any engineering analysis or study. This applies regardless of whether a charge is made for the recommendation, or if it is provided free of charge.

Responsibility for selection of the proper product or application rests solely with the purchaser. In the event of errors or inaccuracies determined to be caused by Hubbell Power Systems, Inc., its liability will be limited to the re-performance of any such analysis or study.



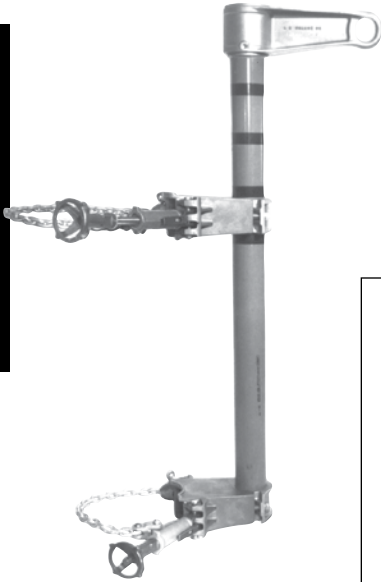
**NOTICE: For latest revision of our Catalog and Literature, please visit our web site: [www.hubbellpowersystems.com](http://www.hubbellpowersystems.com)**

NOTE: Because Hubbell has a policy of continuous product improvement, we reserve the right to change design and specifications without notice.

©Copyright 2010 Hubbell Incorporated • 210 North Allen Street • Centralia, MO 65240 USA

[www.hubbellpowersystems.com](http://www.hubbellpowersystems.com)

E-mail: [hpsliterature@hps.hubbell.com](mailto:hpsliterature@hps.hubbell.com)



C4000440



C4000090 Standard



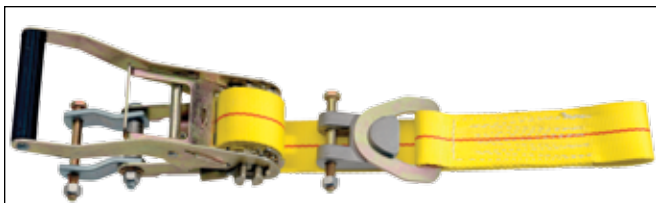
C4000315 5" Base



T4001937



T4001938



**CHAIN BINDER TYPE TRANSFORMER GINS**

A versatile tool for hoisting distribution transformers and apparatus up the structure. The standard base unit is for mounting on clear pole sections and the 5" extended base model allows mounting to bridge up to 4" x 5" crossarms. A wheel tightener and 36" chain is a part of each unit. Both models have 2000 pound maximum ratings, including hand pull force. With a single hoist line through a pulley on the gin and a sheave near the base of the structure, the lift load is 900 pounds (lift load plus the pull load equals the capacity). Using 4-4 blocks, the lift load can be 1,400 pounds. A swivel-hook block should always be used in the eye of the gin, and a sheave or a capstan near the bottom of the structure should be used to thread the handline through. Gins are not intended for applications involving side pull on the hoist line, or with the lift load in a tagged out position. That is, the load line should be parallel to the gin pole. Pole length: 26 inches.

Catalog No.	Description	Weight
C4000090	Standard Base	15 lb./6.75 kg.
C4000315	5" Extended Base	30 lb./9 kg.

**Swivel-Top Gin**

Same application as Transformer Gin, but the top eye casting can be swiveled to bypass secondary lines when necessary. The cap is not intended to swivel while under load.

This gin has identical load ratings to gins above. It has a 48" Epoxiglas<sup>®</sup> mast and with two wheel tighteners and 36" chain units.

Catalog No.	Description	Weight
C4000440	5" Extended Base	37 lb./16.7 kg.

**STRAP-TYPE TRANSFORMER GINS**

With a strap-type ratchet-action mounting mechanism rather than a chain binder, these otherwise are the same as chain-type gins. With 10,000-lb. rated tensile strength, 2"-wide polyester strap comes in 44" length to fit most structures. Wide handle opening on rapid-action ratchet permits easy operation, even with rubber gloves and leather protectors.

Both models have a 2,000-lb. maximum rating, including load and fall-line pull. When calculating load capacities, allow 10 percent for friction in rope pulleys. Then, for example, using two double-sheave \*blocks, the maximum load that can be lifted would be 1,400 lb. Or, using a \*single sheave, the maximum lift load would be 900 lb.

Gins are not intended for applications involving side pull on the hoist line or with the lift load in a tagged-out position. That is, the load line should be parallel to the gin pole.

**Epoxiglas<sup>®</sup> pole: 3" diameter, 26" length**

Catalog No.	Description	Weight
T4001937	Standard-Base Gin	14 <sup>1</sup> / <sub>4</sub> lb./6.4 kg.
T4001938	5" Extended-Base Gin	18 <sup>1</sup> / <sub>4</sub> lb./8.2 kg.

\*A swivel-hook block should always be used in the eye of the gin and a sheave or a capstan near the bottom of the structure.

**Strap Binder Kit**

Catalog No.	Description	Weight
T4002007	D-Buckle Strap Binder only	4 <sup>1</sup> / <sub>2</sub> lb./2 kg.

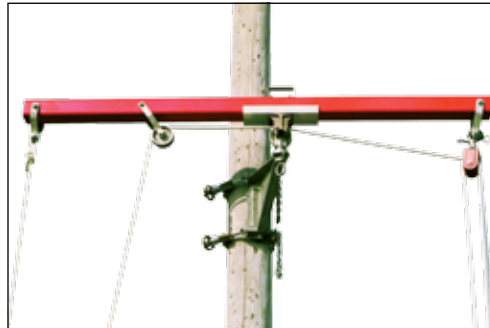


H20  
or  
T4000870

← 30° →  
max.

The gin beam can be rotated in a half circle, swinging the load away from underbuild obstructions. Rocker-action of the beam, up to 60°, controls distance of the load from the pole.

C4000648



## MULTI-DUTY GIN

The Multi-Duty Gin clamps at the top of the pole to lift heavy equipment or where ridge pins or other obstruction prohibit, the Gin can be mounted lower on the pole without changing the mounting bracket.

The sturdy 4" x 4" Epoxiglas® beam gives the unit a 2000 pound load rating.

With the beam removed, the mounting bracket can be used by itself as a gin for hanging transformers . . . maximum rating of the gin bracket is 2500 pounds.

Catalog No.	Description	Weight
H20	44" Crossarm Gin	10 lb./4.5 kg.
T4000870	56" Crossarm Gin	12 lb./5.5 kg.
T4001708	Convertible 44" Crossarm Gin	10 lb./4.5 kg.

Catalog No.	Description	Weight
C4000648	Multi-Duty Gin, Complete	70 lb./31.5 kg.
C85W	Mounting Bracket with Wheel Tightener	17 lb./7.7 kg.

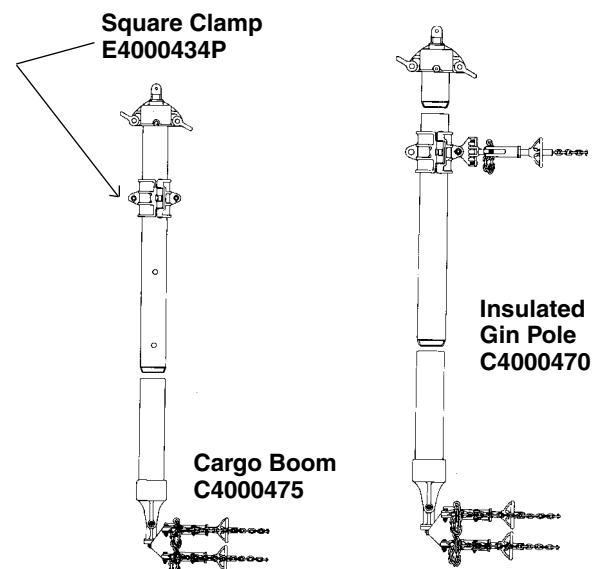
## INSULATED GIN POLE/CARGO BOOM

These two load handling tools, both built around 4" x 4" Epoxiglas® have many interchangeable parts for heavy duty applications.

The Insulated Gin Pole is equipped with three chain tighteners which can be mounted to the pole to give lifting capacities of 5000 pounds. The top casting is fitted with two clevises for convenience in loading. Placing a pole clamp in the swivel lug, allows use of wire tong for stabilizing the gin.

The Cargo Gin is rated at 1000 pound capacity. The center casting can be adjusted to three possible positions for guy loading the tool. The base mounting is hinged to permit pivoting of the tool from horizontal upward 90° to vertical and will also swivel a full 180°, depending upon the proximity to the structure. The casting at the top is the same as on the Insulated Gin Pole.

Catalog No.	Description	Weight
C4000470	8' Insulated Gin Pole	74 lb./33.3 kg.
C4000472	12' Insulated Gin Pole	90 lb./40.5 kg.
C4000475	16' Cargo Boom/Chain Binders	100 lb./45 kg.
C4000483	16' Cargo Boom/Tower Binders	96 lb./43.2 kg.

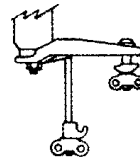


## SWIVEL BOOM — HEAVY DUTY

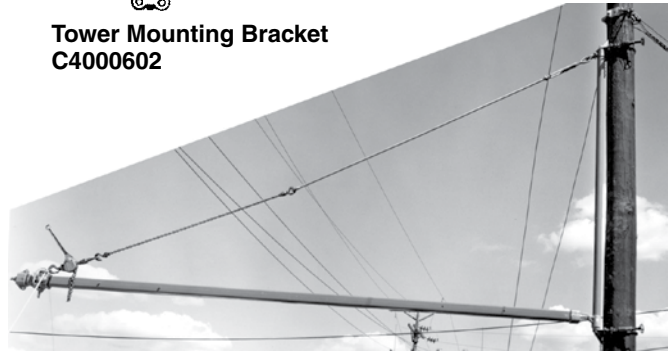
The Heavy Duty Swivel Boom assembly is used on EHV to swing an insulator cradle and insulator into the structure for repair. The 4" x 4" Epoxiglas® horizontal boom, coupled with the 3" round Epoxiglas mast, is designed for 1000 pounds capacity.

The rigging of this unit is shown in the photo below, and requires a link stick and hoisting device in a diagonal position. The adjustable clamp on the square boom, can be adjusted to three different positions for guy loading. In addition, the casting on the end of the boom is fitted with two clevises for guy loading the tool.

The illustration at right shows the Swivel Boom on a pole mounted configuration; including the two chain tighteners. Also available with four tower mounting brackets to fit towers up to 6" to 6" angle legs.



**Tower Mounting Bracket  
C4000602**



**C4000469**

Catalog No.	Description	Weight
C4000464	16' Boom, 8' Mast, Clamps For Tower Mounting	128 lb./57.6 kg.
C4000465	18' Boom, 10' Mast, Clamps For Tower Mountings	140 lb./63 kg.
C4000469	18' Boom, 10' Mast, Chain Binders for Pole Mountings	140 lb./63 kg.



## SWIVEL BOOM — MEDIUM DUTY

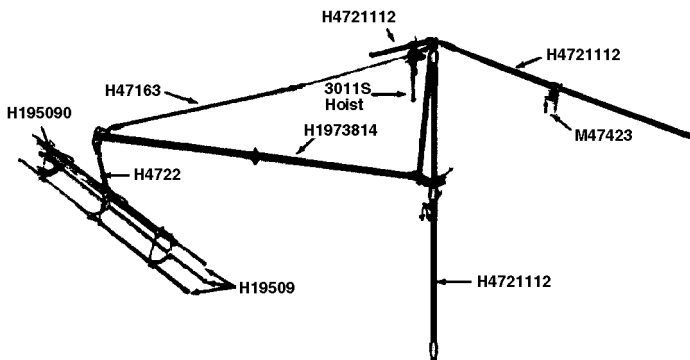
The medium duty Swivel Boom assembly is used on transmission structures to lift and move the insulator cradle and insulators into a convenient work position on the structure. The 3" round Epoxiglas® horizontal boom and vertical mast are designed for 500 pound ratings when used in a steel tower configuration and 600 pound rating for wood pole assembly.

An insulated link stick and a hoist are used in a diagonal position to lift the cradle full of insulators clear of the deadend

strain poles and other obstructions.

For tower use, three boom support poles should be added in a tripod configuration as shown in the illustration at left below.

Catalog No.	Description	Weight
H1973814	14' Boom, 8' Mast, Clamps For Tower Mounting	70 lb./31.5 kg.
H1973H10	10' Boom, 6' Mast, Chain Binders for Pole Mountings	61 lb./27.5 kg.



**H1973H10**

## BOOM SUPPORT POLE



**H4721112**

These 2½" diameter Epoxiglas® poles are used to brace either the heavy duty or medium duty Swivel Booms in a tripod arrangement. They are anchored to the steel tower with tower type saddles (M4742 and M47413). This same tool is also used as the horizontal member for trolley pole changeouts of suspension insulators.

Catalog No.	Pole Diameter & Length	Overall Length	Weight
H4721112	2½" x 12'	12'9"	18.5 lb./8.3 kg.