



# Truck Accessories

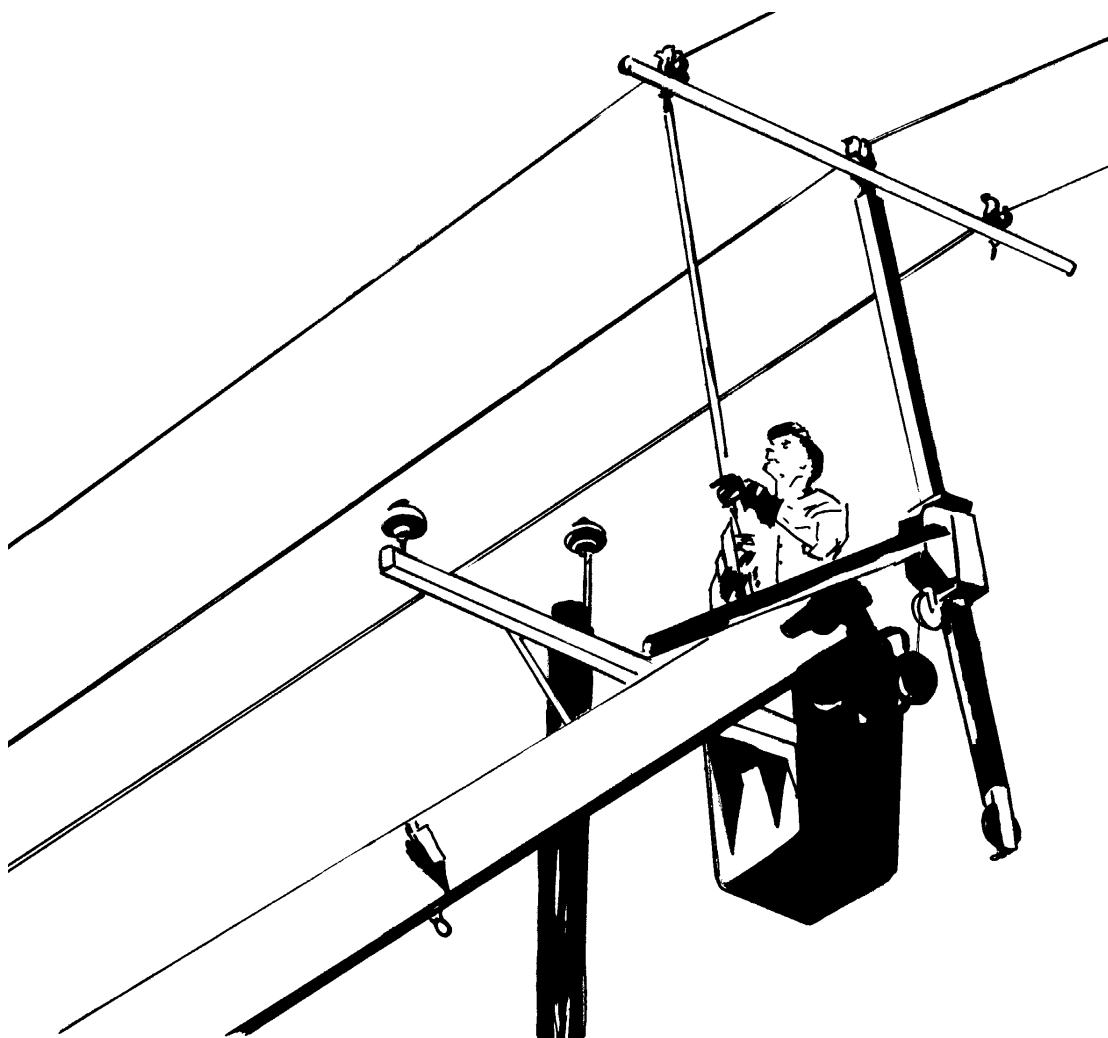
## Warranty - Material

Hubbell Power Systems, Inc. warrants all products sold by it to be merchantable (as such term is defined in the Uniform Commercial Code) and to be free from defects in material and workmanship. Buyer must notify the Company promptly of any claim under this warranty. The Buyer's exclusive remedy for breach of this warranty shall be the repair or replacement, F.O.B. factory, at the Company's option, of any product defective under the warranty which is returned to the Company within one year from the date of shipment. NO OTHER WARRANTY, WHETHER EXPRESS OR ARISING BY OPERATION OF LAW, COURSE OF DEALING, USAGE OF TRADE OR OTHERWISE IMPLIED, SHALL EXIST IN CONNECTION WITH THE COMPANY'S PRODUCTS OR ANY SALE OR USE THEREOF. The Company shall in no event be liable for any loss of profits or any consequential or special damages incurred by Buyer. The Company's warranty shall run only to the first Buyer of a product from the Company, from the Company's distributor, or from an original equipment manufacturer reselling the Company's product, and is non-assignable and non-transferable and shall be of no force and effect if asserted by any person other than such first Buyer. This warranty applies only to the use of the product as intended by Seller and does not cover any misapplication or misuse of said product.

## Warranty - Application

Hubbell Power Systems, Inc. does not warrant the accuracy of and results from product or system performance recommendations resulting from any engineering analysis or study. This applies regardless of whether a charge is made for the recommendation, or if it is provided free of charge.

Responsibility for selection of the proper product or application rests solely with the purchaser. In the event of errors or inaccuracies determined to be caused by Hubbell Power Systems, Inc., its liability will be limited to the re-performance of any such analysis or study.



**NOTICE:** For latest revision of our Catalog and Literature, please visit our web site: [www.hubbellpowersystems.com](http://www.hubbellpowersystems.com)

NOTE: Because Hubbell has a policy of continuous product improvement, we reserve the right to change design and specifications without notice.

©Copyright 2010 Hubbell Incorporated • 210 North Allen Street • Centralia, MO 65240 USA  
[www.hubbellpowersystems.com](http://www.hubbellpowersystems.com)

E-mail: [hpsliterature@hps.hubbell.com](mailto:hpsliterature@hps.hubbell.com)

# Three-Phase Boom Lifts

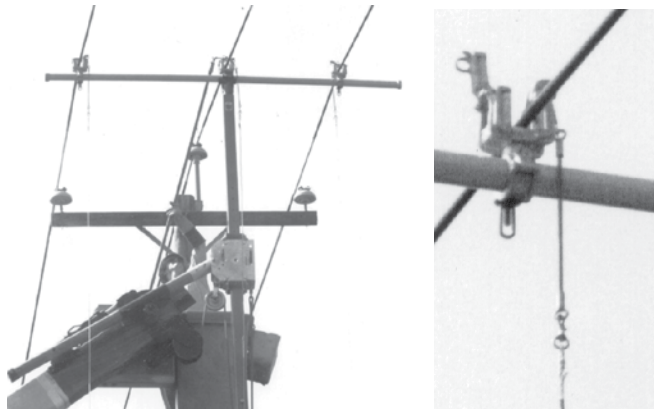
- Jib-mounted • Winch-driven
- Constant-load monitor • 1,200-lb. rating\*

Hot-line tool set enables a material-handler boom truck to lift single- or three-phase system conductors. Operator remains in the bucket, positioned to perform such routine jobs as replacing insulators, crossarm or pole

Available in eight sleeve sizes to fit on boom truck jibs listed on page 4153, each complete unit includes:

- 10' Vertical orange Epoxiglas® mast (4" x 4") and
- 10' Horizontal gray Epoxirod® support arm (2½" dia.) with four Heavy-Duty Roller-type Wireholders for conventional crossarm construction and
- 6' Horizontal gray Epoxirod support arm (2½" dia.) with one additional Wireholder for center mast for armless construction and

Storage bags for all components above.



Wireholders latch easily from bucket with hookstick.  
12" Epoxirod link insulates each latch-release lanyard.



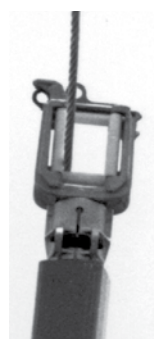
For crossarm construction: 10-foot arm attaches at mast top. Fourth wireholder furnished for crossarm-mounted neutral, not shown.

For armless construction: 6-foot arm attaches at proper level on series of mounting holes on mast.

## Maximum Ratings, all units

Vertical load per wireholder: 300 lb.

\*Balanced vertical load: 1,200 lb., includes tool itself



Center wireholder, used alone, permits single-phase lifts.

See the next page for Ordering Information.

Jib Sleeve, available separate and in other sizes



Winch line connects to mast base to raise conductors and provide working clearances for operator.



Boom adapter can pin at various angles. Built-in scale continuously monitors load uplift. Nylon rollers ensure smooth mast travel.

# Three-Phase Boom Lifts

## Complete Units

Each complete unit includes a jib sleeve in size listed in addition to:

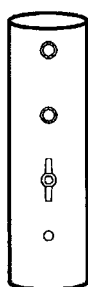
- 10' Vertical orange Epoxiglas® mast (4" x 4") and
- 10' Horizontal gray Epoxirod® support arm (2½" dia.) with four Heavy-Duty Roller-type Wireholders for conventional crossarm construction and
- 6' Horizontal gray Epoxirod support arm (2½" dia.) with one additional Wireholder for center mast for armless construction and
- Storage bags for all components above.

**Weight each: 225 lb. / 102 kg.**

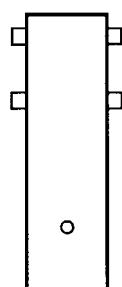
Catalog No.	Truck Application
C4001612	Asplundh: 3¾"-dia. jib
C4001613	Telelect: 4¼"-dia. jib
C4001664	ALTEC®: 4"-dia. jib
C4001677	Hi-Ranger model 5H*: 2⅞"-dia. jib
C4001709	Teco or Holan: 4" x 4"-sq. jib
C4001710	Pitman: 4" x 5"-sq. jib
C4001711	R.O. Products: 5¼"-dia. jib
C4002719	No Jib Sleeves included. See below for correct size.

\*For Hi-Ranger model 6H with top-mounted winch, order E4002215 Jib Sleeve, listed below.

## Jib Sleeves ONLY



**Asplundh  
E4001651**



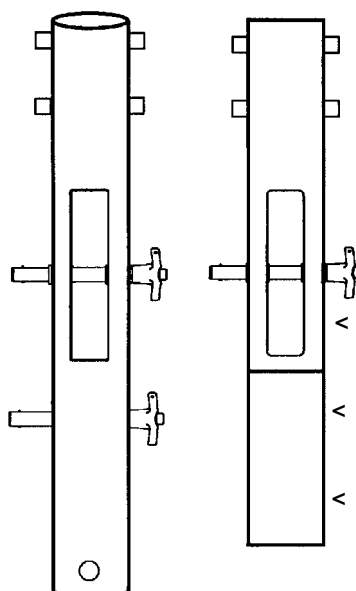
**Teco/Holan  
E4001689**

**Telelect  
E4001652**

**Pitman  
E4001714**

**Hi-Ranger  
model 5H  
E4001679**

**RO Products  
E4001715**



**ALTEC®  
E4001678**

**Telelect  
E4002262**

## Jib Adapters – Material Handlers

Catalog No.	Jib Application	Weight
E4001651	3¾"-dia., as Asplundh	15 lb./6.75 kg.
E4001652	4¼"-dia., as Telelect	15 lb./6.75 kg.
E4001678	4"-dia., as ALTEC®	20 lb./9.09 kg.
E4001679	2⅞"-dia., as Hi-Ranger model 5H	15 lb./6.75 kg.
E4001689	4" x 4"-sq., as Teco or Holan	20 lb./9.09 kg.
E4001714	4" x 5"-sq. as Pitman	20 lb./9.09 kg.
E4001715	5¼"-dia., as R.O. Products	20 lb./9.09 kg.
E4001953	4" x 4" Reach All	20 lb./9.09 kg.
E4002215	4" x 4"-sq., as Hi-Ranger model 6H with top-mounted winch	22 lb./10.8 kg.
E4002262	4¾"-dia., as Telelect on over-center model trucks	15 lb./6.75 kg.
E4002293	3½"-sq., as Lift-All	22 lb./10.8 kg.
T4002647	4" x 4" ALTEC®	44 lb./21.6 kg.
PST4003111	4" x 4" ALTEC® Adapter fits AM55	20 lb./9.09 kg.

**For other sizes, consult factory.**

Slotted opening in longest two models at left accepts rope sheave for operation by winch mounted on top of boom tip. Sleeve E4001678 works on ALTEC® rigs with winch mounted on top or bottom of boom tip.

**Hi-Ranger model 6H  
E4002215**

**Lift-All  
E4002293**

**Reach-All  
E4001953**

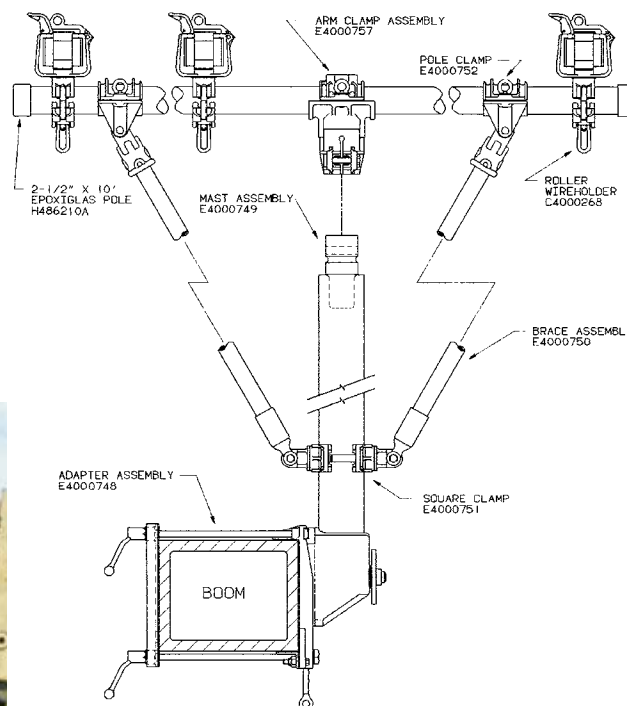
## Boom Mounted Auxiliary Arm Square Mast

The 4" x 4" mast is fitted with a quick mounting assembly which attaches to booms from 5<sup>7</sup>/<sub>8</sub>" x 7<sup>3</sup>/<sub>8</sub>" to 12" x 12", both square and rectangular. The working end of the mast will accept several accessories such as an Epoxiglas® Auxiliary Arm, single lifting wire holder or a sheave for gin work.

The Auxiliary Arm may be swiveled to and locked into any desired position. The single lifting wire holder may also be swiveled to maintain conductor alignment.

The gin sheave will not swivel and is pinned stationary to keep the plane of the sheave in the vertical position at all times.

For use above 15kV, add M48057 insulator to each wire-holder; see Page 4155.



For three phase applications. The auxiliary arm may be rotated to align the wire holders with the conductors, then locked in position.



Easy mounting with our two intermeshing castings with single pivot stud.



**C4000747  
Wireholder**

Max. Side load per Wireholder: 100 lb.  
Max. Vertical Load per Wireholder C4000268:  
Arm Length                      With Braces  
10'                                      200 lb.

### Mechanical Rating

Balanced Vertical Load      Unbalanced Vertical Load  
1000 lb.                              800 lb.



The single lifting wire holder may be rotated for alignment with the conductor.



**OPTIONAL ADAPTER**  
for Round Booms, see pages  
4163 & 4164



**C4000746  
Sheave**

The sheave will take a 3/4-inch diameter rope. The maximum load for the gin is 800 lb.



**T4001658  
Conductor Hook**

Jib-mount hook accepts conductor through 1<sup>1</sup>/<sub>4</sub>" diameter.

Catalog No.	Description	Weight
C4000744	Mast Assy., 10' Arm & Braces for Booms 5 <sup>7</sup> / <sub>8</sub> " x 7 <sup>3</sup> / <sub>8</sub> " to 12" x 12"	130 lb./58.5 kg.
C4000745	Mast Assembly without Arm	90 lb./41 kg.
C4000746	Rope Sheave Assembly	8 lb./ 3.6 kg.
C4000747	Single Wire Holder	13 lb./ 5.9 kg.
T4001658	Conductor Hook for 3" jib (Altec®)	3 lb./1.35 kg.
C4001469	9"-dia. Boom Adapter (Altec®)	40 lb./18 kg.
C4001877	8"-dia. Boom Adapter (Altec®)	40 lb./18 kg.



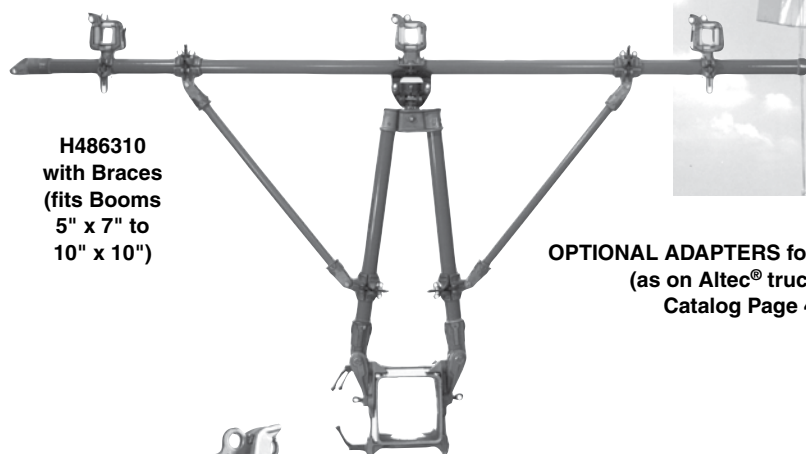


# Boom Auxiliary Arm

**CHANCE®** 4155

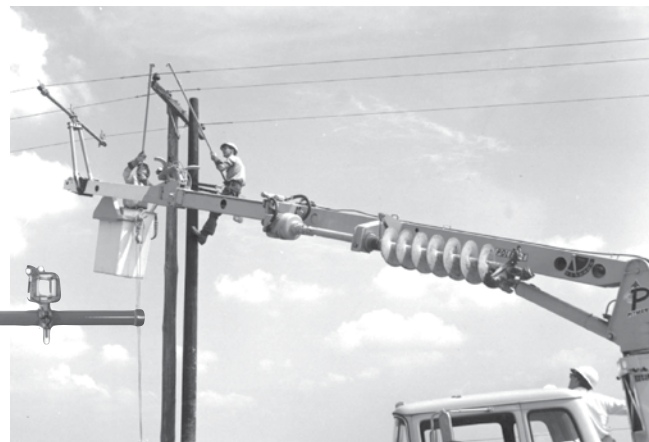
The Auxiliary Arm consists of a boom mast and arm of Epoxiglas® construction for mounting on an insulated boom such as the Pitman Polecat®. The arm is designed for use on light construction when handling multiple conductors. The two-legged mast can be mounted on square or rectangular shaped booms designed to handle 2,000 pounds or more. If boom units of lesser ratings are employed, the lifting and maneuvering application of this unit must be reduced accordingly.

H486310	10' Assembly with braces	120 lb/54.0 kg.
H48633	Bipod-Arm clamp only	12½ lb./ 5.6 kg.
H48634	Arm Brace Assembly only	8¾ lb./ 3.9 kg.
H4863	4' Bipod Mast only with boom clamps	64 lb./28.8 kg.
C4000351	2½" x 10' Horizontal Arm	13 lb./10.35 kg.



**H486310 with Braces**  
(fits Booms 5" x 7" to 10" x 10")

**OPTIONAL ADAPTERS for Round Booms**  
(as on Altec® trucks), see Catalog Page 4160



For 2½" Arm  
C4000690 with 2½" opening  
C4000268 with 2" opening



**C4001669**  
for 3" dia. Jib



**M48057**  
fits all other wireholders



**M480516**



**M480517**



**E4000008**

## AUXILIARY ARM ATTACHMENTS

**Fork type wireholders** — with 1" or 1½" opening, counter balanced latch which closes automatically behind the conductor to hold it in the wireholder. Complete with 2½" pole clamp.

**C-Type Wireholder** — For rubber glove work, the Chance "C"-type Wireholder is suspended for a 2½" diameter temporary crossarm above the conductor as a hook to receive the conductor after it is untied.

**Roller Wireholder** — Seven Delrin plastic rollers offer protection to conductors while raising the conductor above the work area. Accommodates conductors up to and including 1½ inches in diameter. The gate is held closed by a spring-loaded latch which must be manually opened.

**Insulators**—Epoxy based, available as separate items or can be added to existing auxiliary arm wireholders to upgrade for 34.5 kV use.

Catalog No.	Description	Weight
E4000008P	1½" Fork Wireholder, no Insulator	2½ lb./1.1 kg.
M480515	1" Fork Wireholder, with Insulator	5½ lb./2.5 kg.
M480517	1" Fork Wireholder, no Insulator	2 lb./ .9 kg.
M480516	C-Type Wireholder, no Insulator	2½ lb./1.1 kg.
C4000690	Roller Wireholder, no Insulator	4½ lb./2.0 kg.
C4000268	Roller Wireholder, no Insulator	4½ lb./2.0 kg.
M48057	Epoxy Insulator, 7/16" threads	1¼ lb./0.55 kg.

# Boom-Mounted Auxiliary Arm with Load-Monitor System



## Continuous load readout, audible alarm

Load-Monitor System built into lower end of the mast measures and displays the weight of load being lifted, including the Auxiliary-Arm assembly itself. An audible alarm warns truck operator and others nearby should a preset working load be exceeded. Complete operating and maintenance instructions are furnished with each unit.

Typical application enables lifting a three-phase set of conductors out of the way while a pole, crossarm or other equipment is replaced or repaired. Meter permits operator to check the actual load throughout operation. This can be of extreme importance since these conductor loads are difficult to estimate and vary with conductor sizes and tensions, pole spans and terrain geometry. By helping to alert operators to potential overloads, the load-monitor system can help avoid damage to trucks and other equipment while also adding to personnel safety.

Note that mast base casting has "teeth" on both sides so it can be mounted either way around on the boom for optimum visibility of the meter by the operator.

## Choice of boom adapters, scales, options

Available to fit either round or rectangular booms, both come with hydraulic load gauge scale graduated in either English pounds or metric kilograms.

Optional accessories include a single wireholder and a conductor hook for use on the end of the mast. A rope-sheave assembly also fits the mast for use as a gin. Single wireholder may be swiveled as needed. Hook swivels, but its base pins for control. Sheave pins to keep it aligned in a vertical-plane.

### Load Ratings (mast unit only)

Max. balanced vertical load: 1,000 lb. (454 kg.)

Max. side load: 100 lb. (45 kg.) or 30% of actual vertical load if less

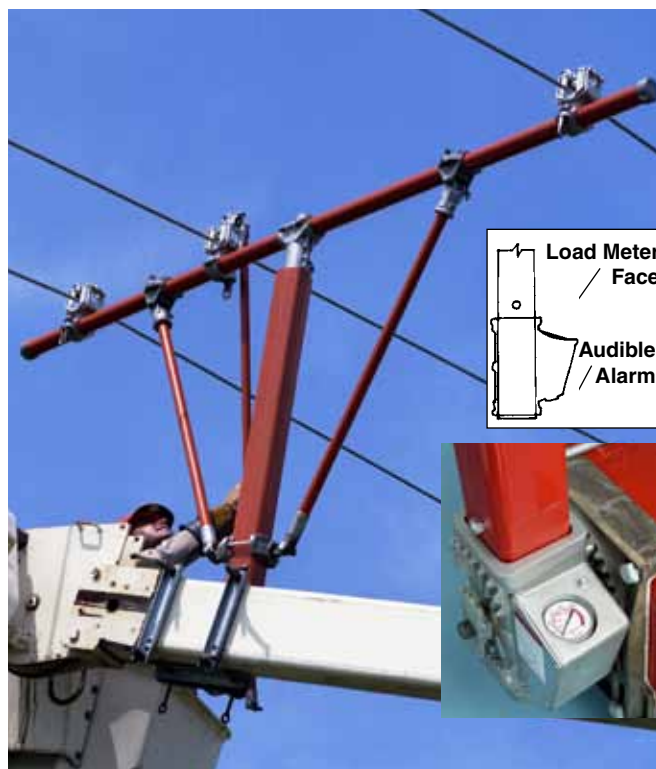
## Ordering Information

Each Auxiliary Arm listed below comes complete with: Appropriate boom adapter, 70" mast assembly, braces, 10' arm and three wireholders with 2" opening.

Catalog No.	Description	Weight
<b>For Square/Rectangular Booms 57/8" x 73/8" to 12" x 12":</b>		
C4001821E	English scale Auxiliary Arm	135 lb./60.75 kg.
C4001821M	Metric scale Auxiliary Arm	135 lb./60.75 kg.
<b>For Round Booms 9" in Diameter (as Altec):</b>		
C4001950E	English scale Auxiliary Arm	135 lb./60.75 kg.
C4001950M	Metric scale Auxiliary Arm	135 lb./60.75 kg.

## Accessories

C4000746	Rope Sheave Assembly	8 lb./3.6 kg.
C4000747	Single Wireholder	13 lb./5.9 kg.
T4001658	Conductor Hook for 3" jib	3 lb./1.35 kg.
E4000748	Sq./Rect. Boom Adapter only	40 lb./18 kg.
C4001469	9"-dia. Boom Adapter only	40 lb./18 kg.



Insulated 4" x 4" vertical mast, 2 1/2"-diameter horizontal arm and braces are of foam-center Epoxiglas® construction. Auxiliary arm may be swiveled and locked at any position. Test button near the meter face checks the alarm and its 9-volt battery's condition.



Square/rectangular and round boom adapter attachments.



Sheave for 3/4" rope; 800 lb. max. load



Single wireholder, 2 1/2" opening



Hook accepts 1 1/4"-dia. max. conductor; also fits on 3" jib



# Swivel-Base Truck Mount

for 12V, 115V, 230V & Hydraulic 1,000-lb. Series 90 Capstan Hoists

**NOTE:** For Hitch-Receiver Mount, see Catalog Section 1150

## Sets at angles needed for variety of jobs

Turntable design permits proper alignment without repositioning service vehicle. Heavy-gauge steel base bolts direct to truck body wherever convenient.

Bracket can be pinned at every 15° interval around circular base for stringing, tensioning, sagging conductors; pulling in cable; hoisting equipment; setting poles; pulling vehicles.

## ⚠ WARNING

This is not a personnel lifting device. A label on the unit warns against lifting people or loads directly above people.

To store hoist on C-bracket, simply remove four bolts. The C-bracket also can be bolted down for fixed-angle.

## Utilize truck as portable power source

Only 12V, 115V, 230V and Hydraulic 1,000-lb.-rated hoists are recommended for truck mounting. See page 1153 to order.

**For transport,**  
hoist can remain  
mounted.



**Swivel Bracket C3080903**

### Swivel Bracket only

Catalog No.	Weight, each
C3080903	18 lb. (8.1 kg.)



**C-Bracket C3080890**

### C-Bracket only — complete with mounting bolts

C3080890	5 lb. (2.25 kg.)
----------	------------------

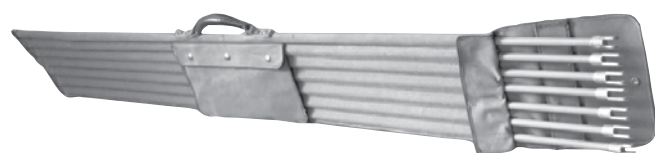


### Weather Shield for 12-Volt DC hoist only

complete with band clamp

C3080909	1 lb. (0.45 kg.)
----------	------------------

# Truck Visual Barrier



**T3060006**

This kit serves as a visual barrier to alert workers and on-lookers to stay away from the truck when the truck is being used in proximity of energized conductors. Six rods, made of bright-orange Epoxirod®, provide a 6-foot air space around the entire perimeter of the truck. The kit also includes six pieces of 3-inch long steel tubing (to be welded to truck by the customer) to hold the barricade rods, 150 feet of yellow rope, and a canvas storage bag. The entire kit requires less storage than traffic cones and can be quickly installed and removed at each job site.

Catalog No.	Description	Weight
T3060006	Truck Visual Barrier	21 lb./9.5 kg.

# Truck Grounding Set

Convenient set provides means to drain off capacitance or static charges from winch trucks and aerial devices. This grounding method should not be considered adequate protection to personnel against conductor contact. Complete set comprises components selected for their task-specific designs:

## Screw Ground Rod

(Catalog No. G3370)

When installed 6-ft. copper-clad rod develops less resistance than straight ground rods. Helix (spiral section), T-handle and wingnut are bronze for high conductivity.

## Flat Face Ground Clamp

(Catalog No. T6001798)

For secure attachment to the truck bed at an area cleaned for electrical contact, clamp features bronze T-handle, aluminum body and serrated jaws with range for  $\frac{1}{8}$ " to  $1\frac{1}{2}$ " angles or flats. Ratings: 400 amps continuous current; 25,000 amps fault current for 15 cycles and 30 cycles.

## C-Type Ground Clamp

(Catalog No. C6001754)

For connection to vertical shaft of ground rod, clamp features smooth jaws and bronze eyescrew. Ratings: 350 amps continuous current; 28,000 amps fault current for 15 cycles and 20,000 amps fault current for 30 cycles.

## Grounding Cable and Ferrules

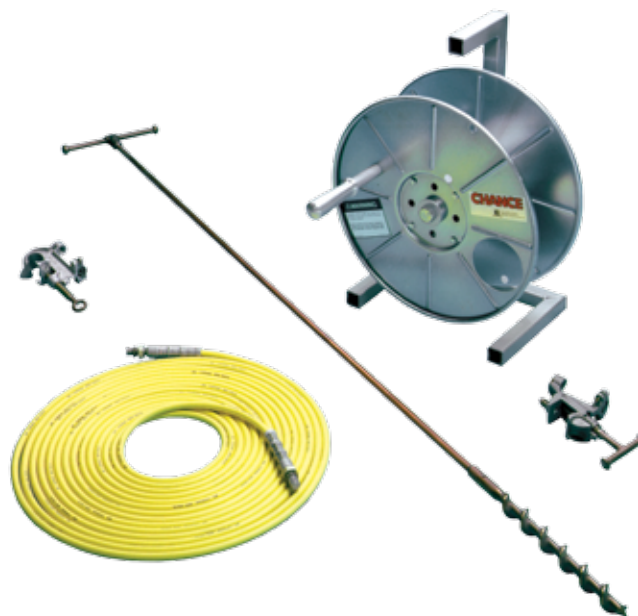
(Catalog No. S6116 & C6002618)

For easy handling, extra-flexible #2 copper cable features fine stranding and tough yellow T-prene rubber compound jacket for all-temperature uses down to -20°F. Cable length is 50 feet. Two shrouded aluminum ferrules come factory-installed on the cable to secure the threaded studs in the clamp terminals.

## Storage Reel

(Catalog No. C4176086)

To help keep ground set clean and ready for use, reel features tubular-steel frame which can be bolted to deck. Reel is for storage only. Cable and clamps must be removed completely from reel before use. Failure to do so could result in a dangerous voltage drop and violent mechanical reactions. A label on the unit gives this warning.



### ORDERING INFORMATION

Catalog No.	Description	Weight
T6001971	Truck Grounding Set	35 lb./15.75 kg.

# Swivel Wireholder Jib Extensions for Telelect trucks\*

Feature a Large Swivel-Type Roller Wireholder with  $2\frac{1}{2}$ " x  $3\frac{3}{8}$ " opening mounted on 3" diameter orange Epoxiglas<sup>®</sup> jib extension.

Tested per ASTM F711 and OSHA.

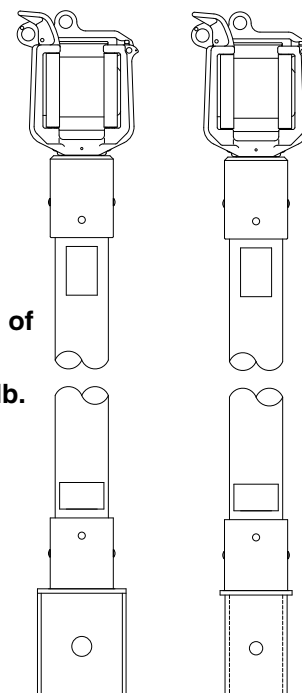
**3" Heavy Wall Epoxiglas<sup>®</sup> Pole with 31" of clear glass (minimum).**

**Jib Extension Rated Working Load: 300 lb.**

### ORDERING INFORMATION

Catalog No.	Fits Jib Size	Weight
PST4002818	4" x 4"	28 lb. / 12.72 kg.
PST4002819	$3\frac{3}{8}$ " x 5"	29 lb. / 13.2 kg.
PST4002820	3" Round	27 lb. / 12.3 kg.
PST4002821	$4\frac{1}{2}$ " Round	28 lb. / 12.72 kg.

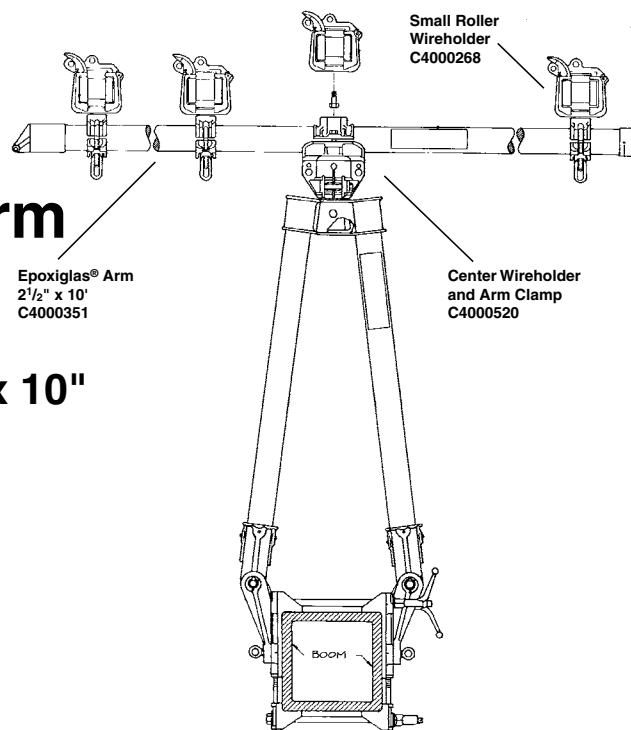
\*To fit other brands of trucks, contact Hubbell Power Systems with detailed specifications.



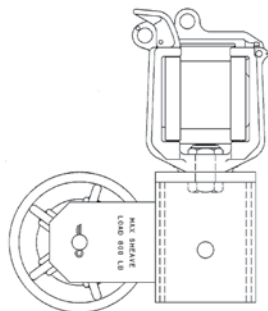


## Bi-Pod Three-Phase Arm H486310

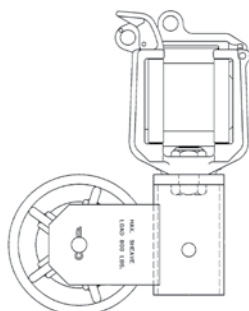
for Square Booms 5" x 7" to 10" x 10"



## Combination Swivel Wireholder/Sheave for ALTEC® trucks\*



for ALTEC® trucks\*  
with 4" x 4" square jib  
Cat. No. T4002530  
(23 lb. / 10.43 kg.)



for ALTEC® trucks\*  
with 3" diameter jib  
Cat. No. T4002529  
(23 lb. / 10.43 kg.)

By design, each unit eliminates changeovers from Wireholder (for picking up a phase conductor) to Rope Sheave (for lifting items). Each combination unit attaches directly to the jib.

**WARNING: ELECTRIC SHOCK HAZARD.** Winch rope can conduct electricity from this device to metal parts on the bucket support. Can cause electrocution death or severe injury. Always remove winch rope from this device when the wireholder is used to support an energized conductor.

Rated Working Load: 800 lb.

Both units feature a Large Swivel-Type Roller Wireholder with 2½" x 3⅜" opening and a 7"-diameter Sheave to accept up to ¾"-diameter rope.

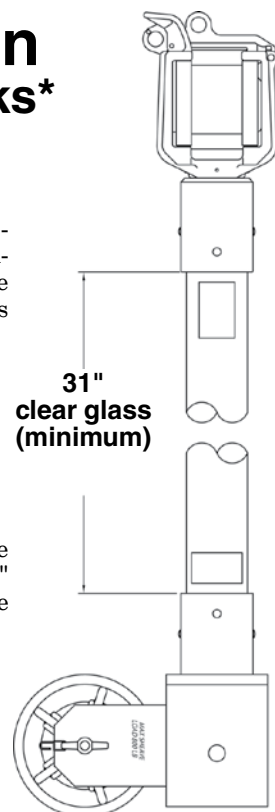
\*To fit other brands of trucks, contact Hubbell Power Systems with detailed specifications.

## Combination Swivel Wireholder/Sheave Jib Extension for ALTEC® trucks\*

By design, unit eliminates changeovers from Wireholder (for picking up a phase conductor) to Rope Sheave (for lifting items). Includes 3"-diameter heavy-wall jib.

Rated Working Load: 800 lb.

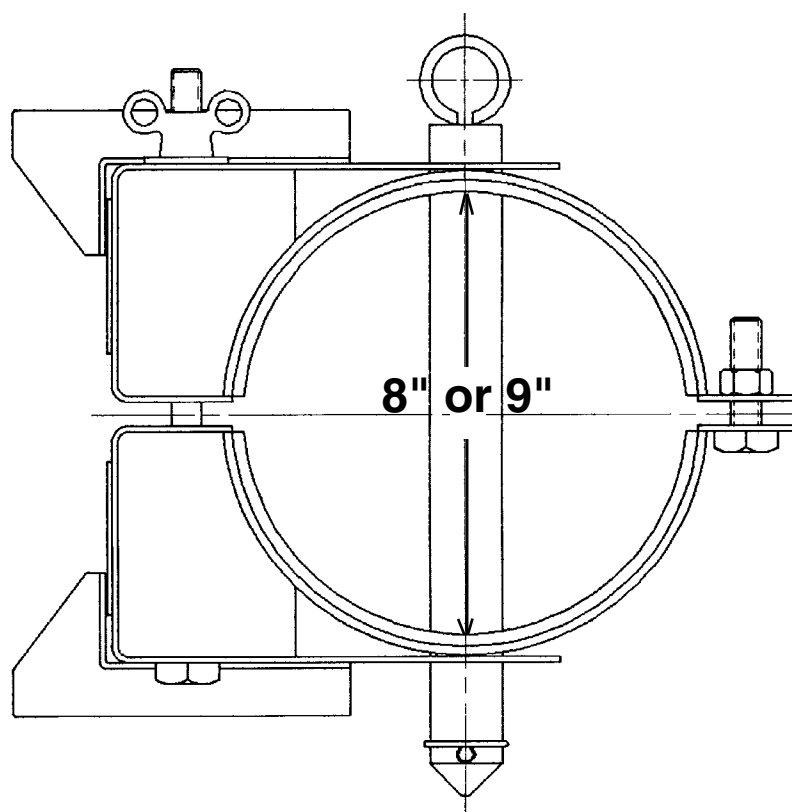
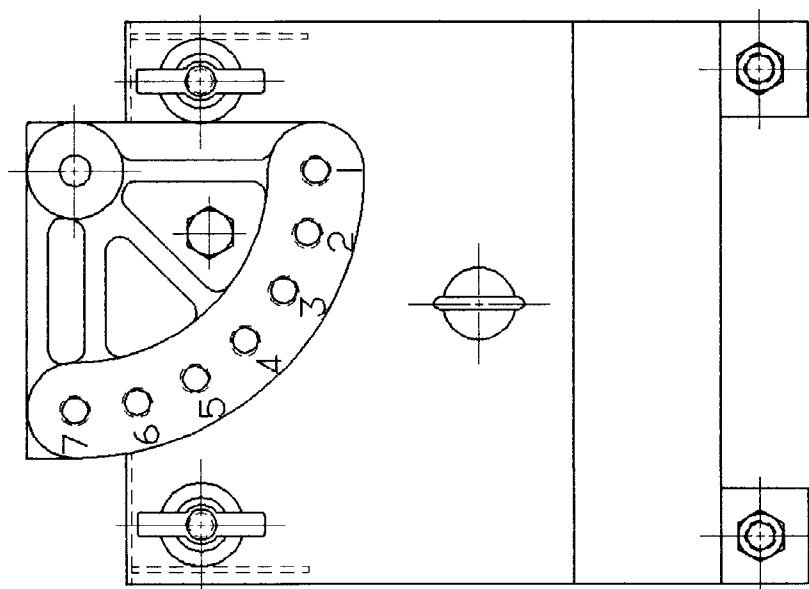
Features a Large Swivel-Type Roller Wireholder with 2½" x 3⅜" opening and a 7"-diameter Sheave to accept up to ¾"-diameter rope.



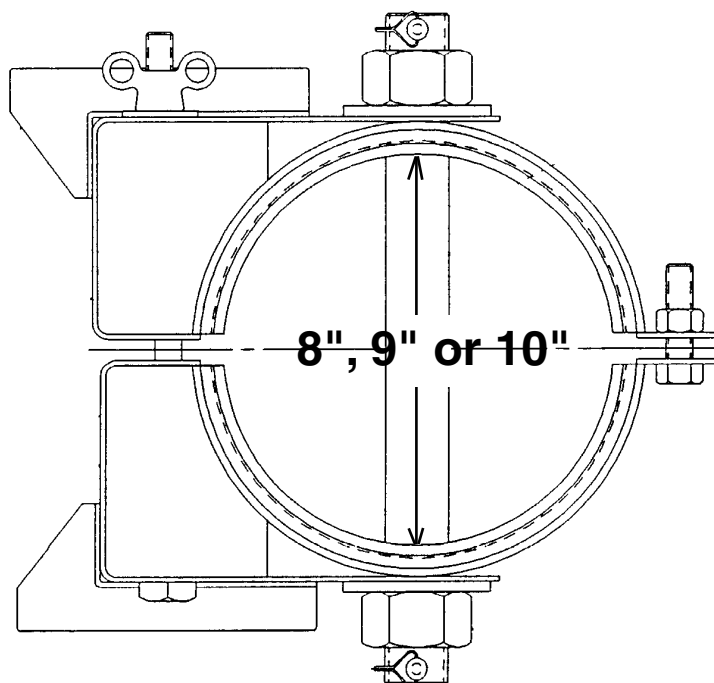
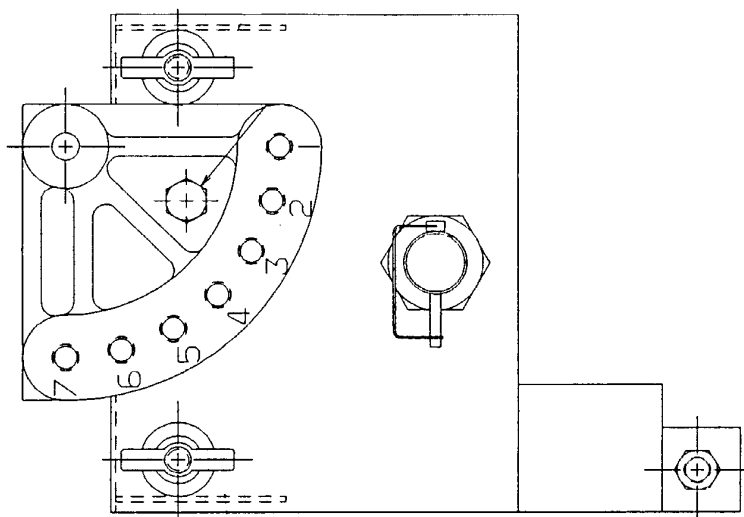
for ALTEC® trucks\* with 4" x 4" square jib  
Cat. No. PST4003059  
39 lb. / 17.7 kg.)

# Boom Adapters for ALTEC<sup>®</sup> trucks C4001467 for 9"-diameter booms C4001878 for 8"-diameter booms

(for use with Bi-Pod assembly in H486310 Three-Phase Arm)

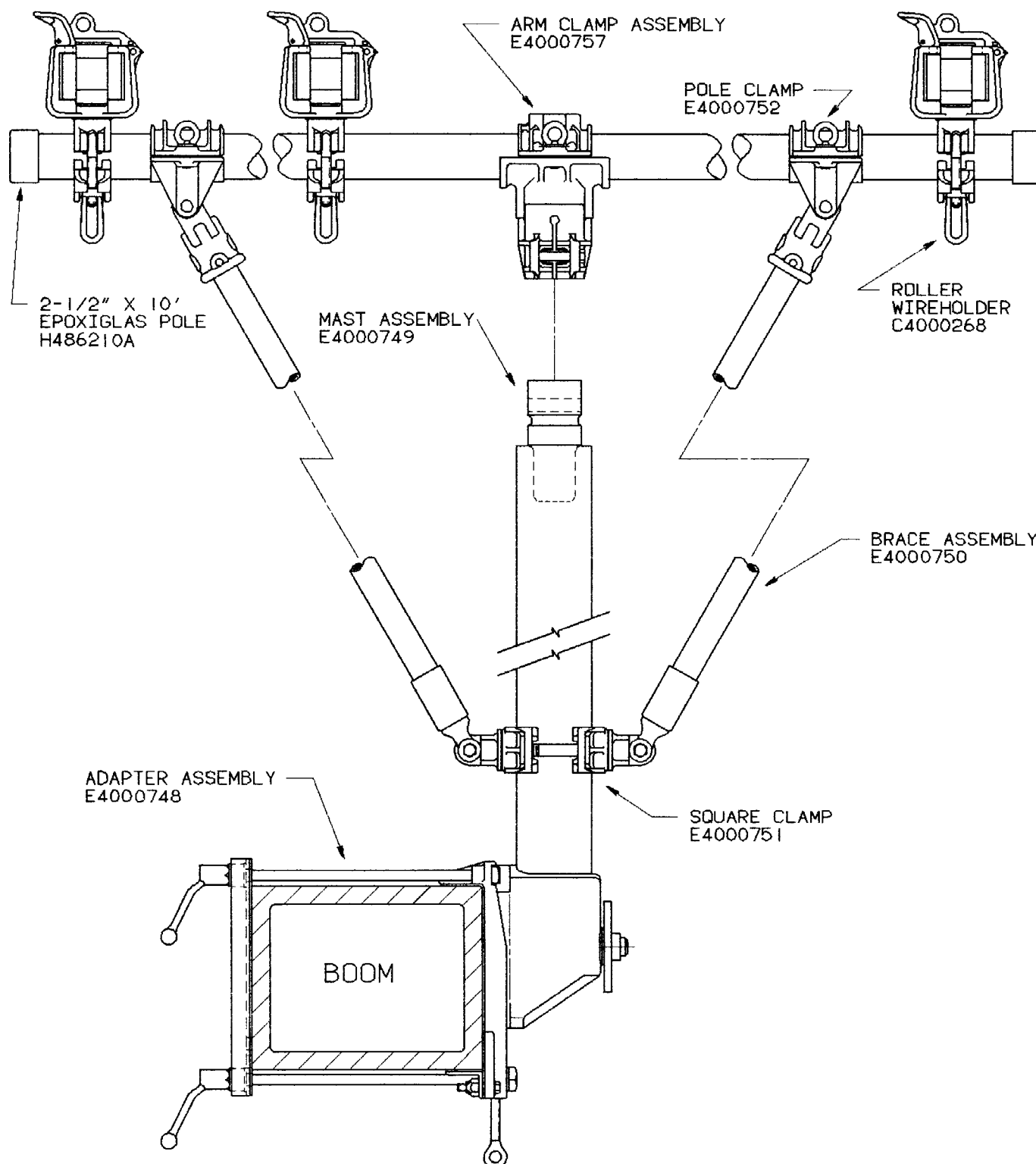


**Boom Adapters for ALTEC<sup>®</sup> trucks**  
 with 8" slide pad on reinforcement collar  
**T4002486BI for 10"-diameter booms**  
**C4002393 for 9"-diameter booms**  
**C4002392 for 8"-diameter booms**  
 (for use with Bi-Pod assembly in H486310 Three-Phase Arm)

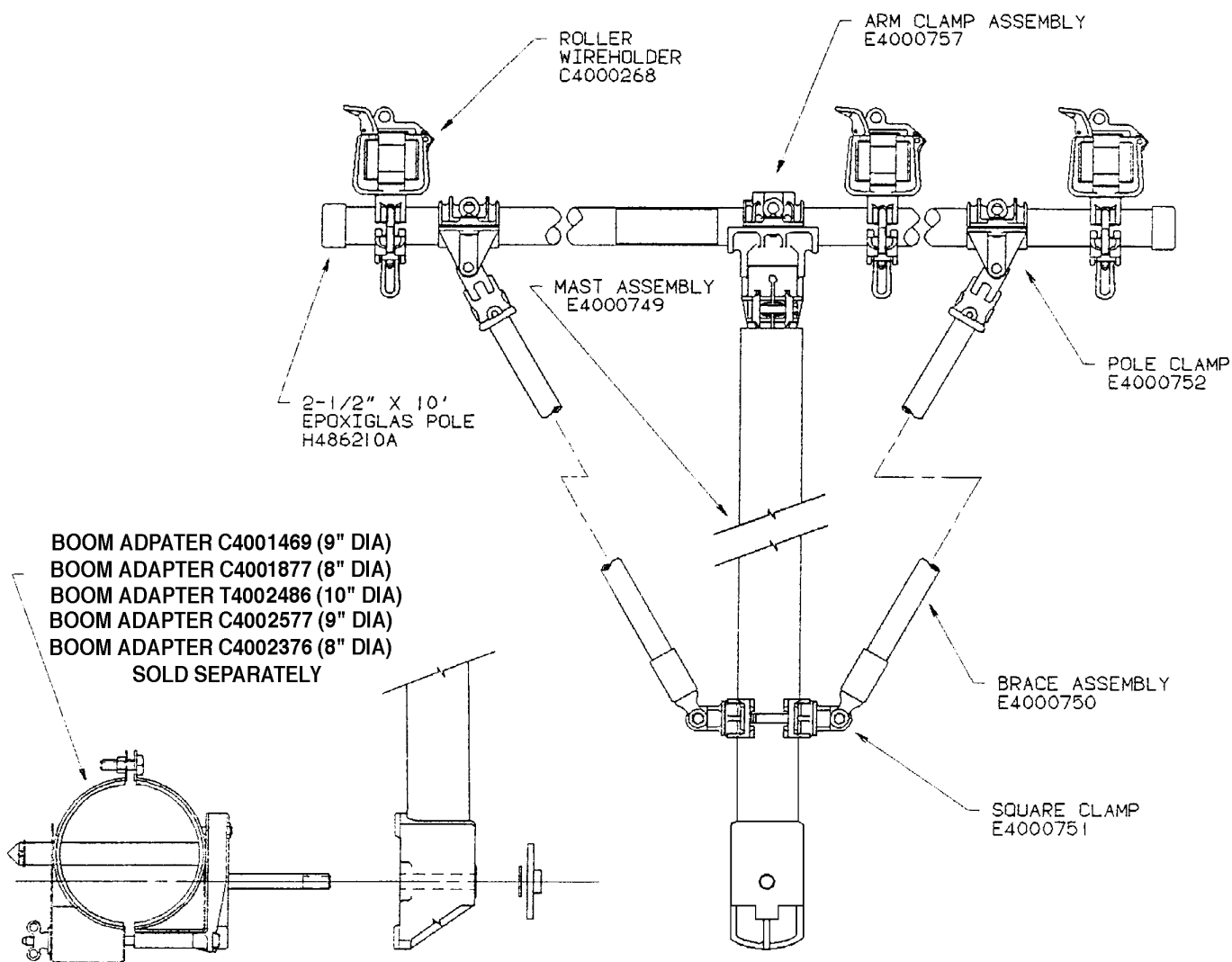




# Three-Phase Boom Assembly C4000744 (for Square Booms 5" x 7" to 10" x 10")



# Three-Phase Boom Assemblies for ALTEC<sup>®</sup> trucks T4001753 w/o Boom Adapter



# Boom Adapters for ALTEC<sup>®</sup> trucks

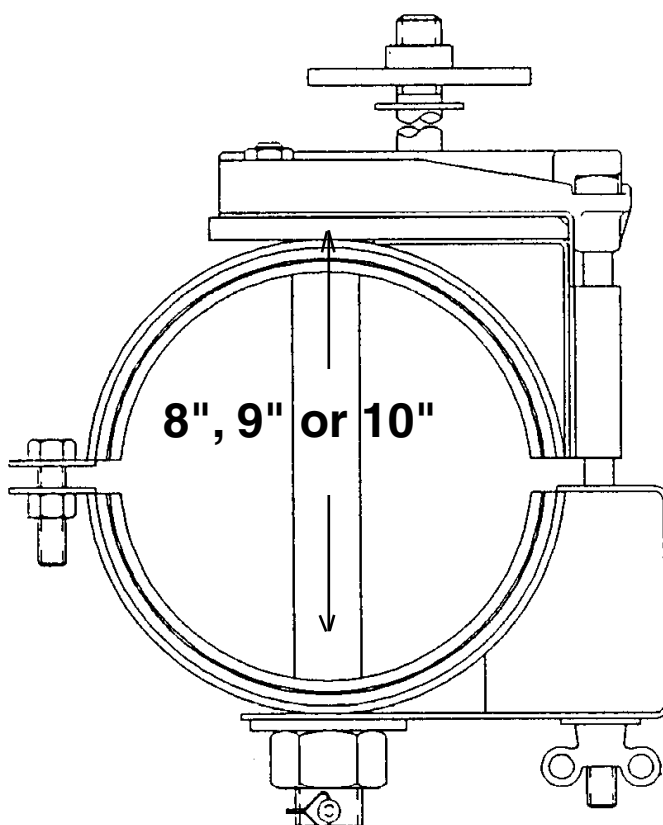
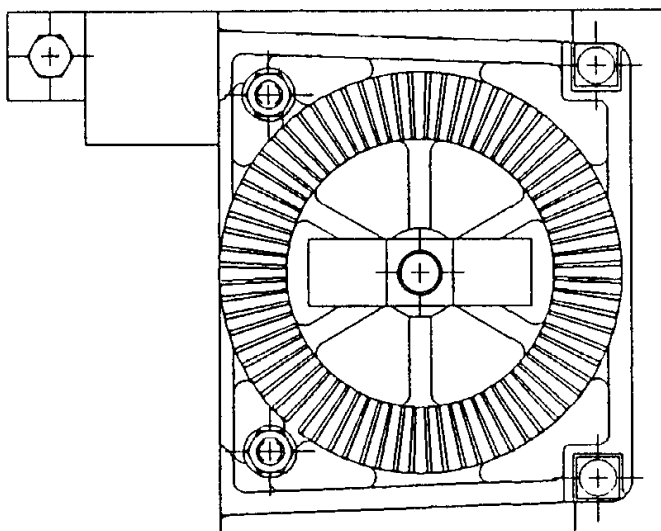
with 8" slide pad on reinforcement collar

**T4002486 for 10"-diameter booms**

**C4002377 for 9"-diameter booms**

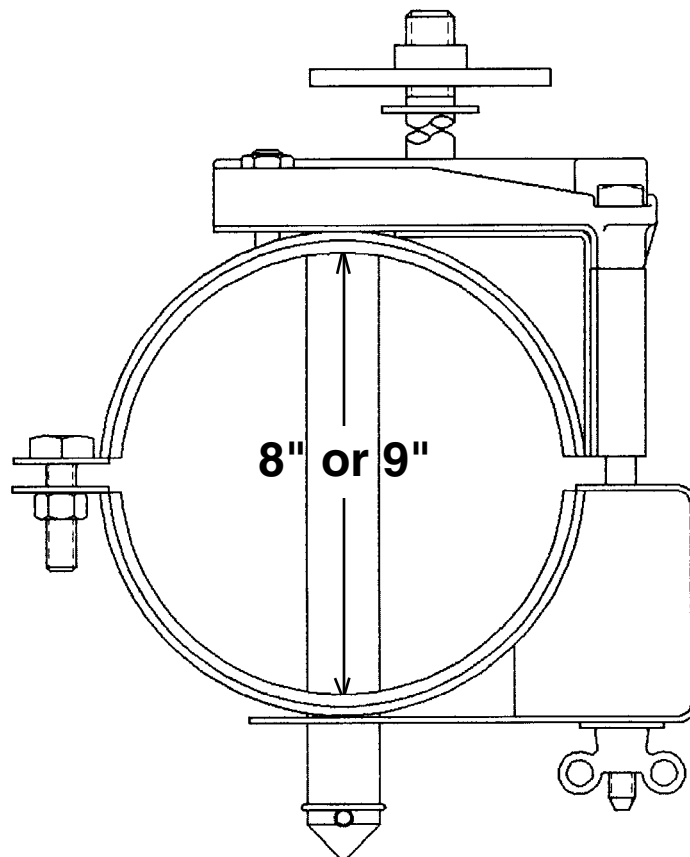
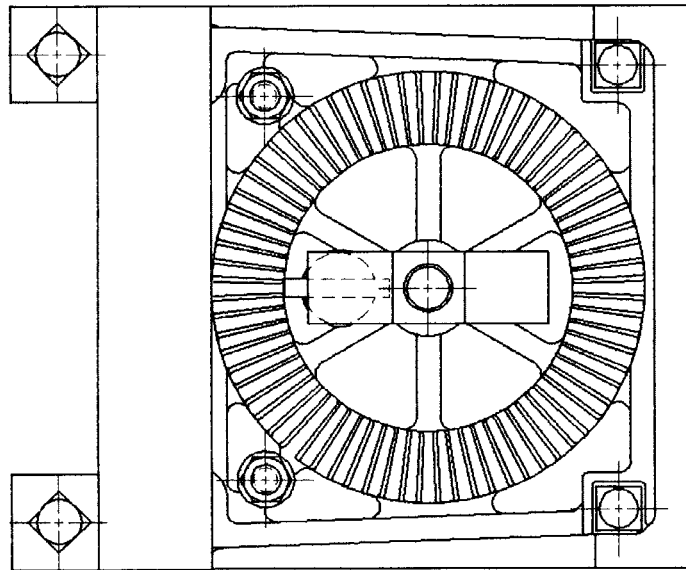
**C4002376 for 8"-diameter booms**

(for 4" x 4" mast in T4001753 Three-Phase Boom Assembly)

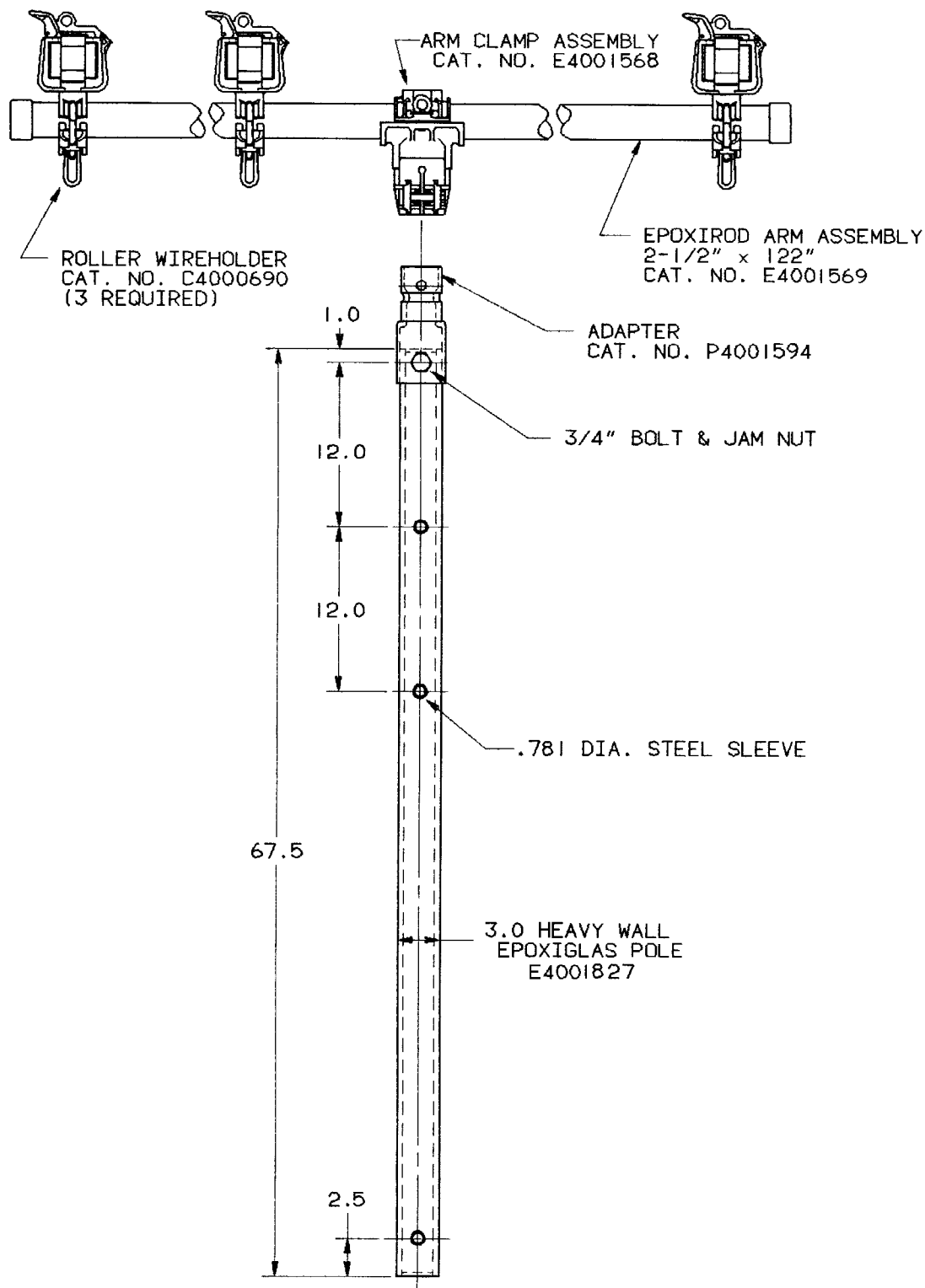




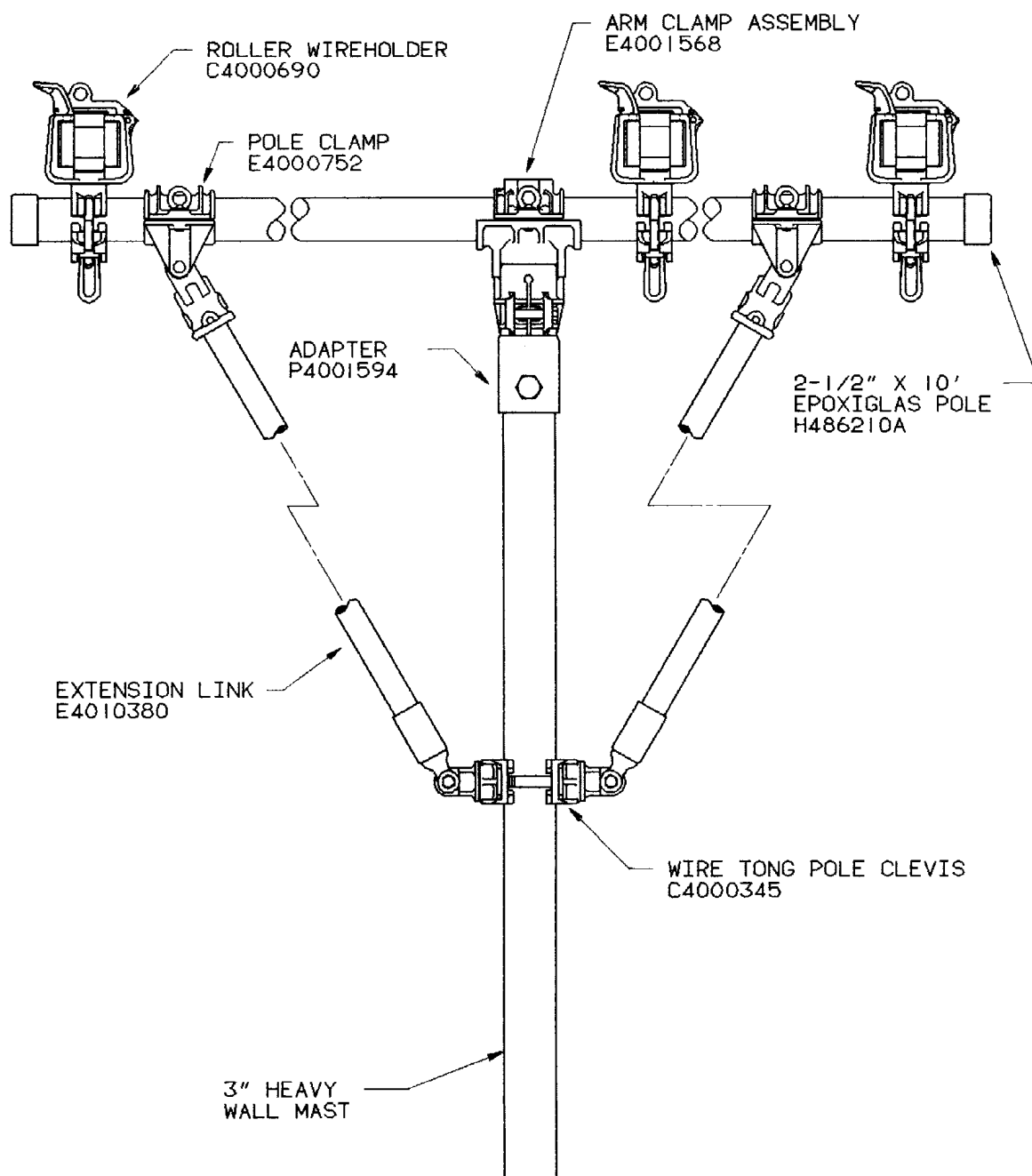
**Boom Adapters for ALTEC<sup>®</sup> trucks**  
**C4001469 for 9"-diameter booms**  
**C4001877 for 8"-diameter booms**  
(for 4" x 4" mast in T4001753 Three-Phase Boom Assembly)



# Auxiliary Arm T4001824 with 3"-diameter mast for ALTEC<sup>®</sup> trucks

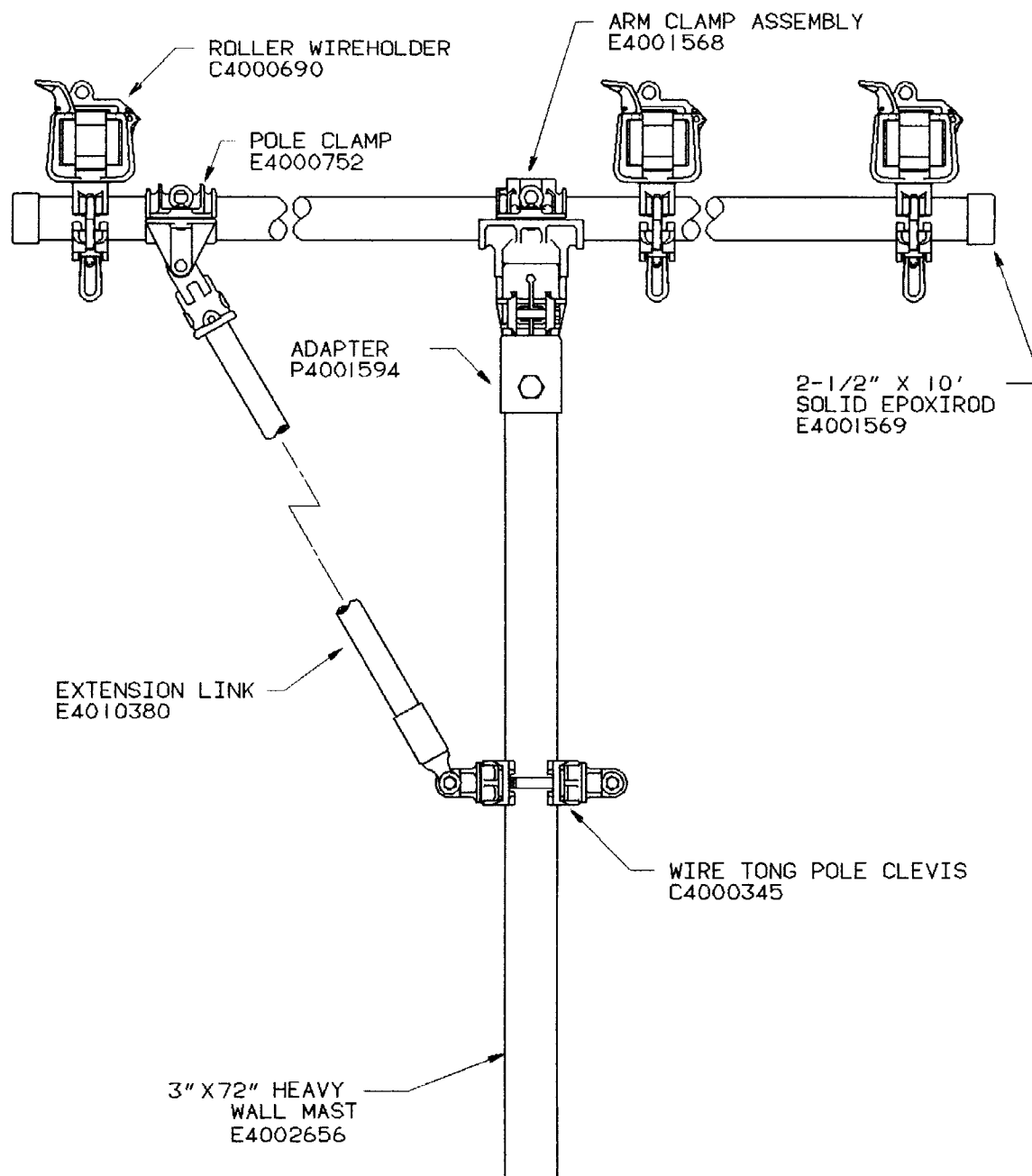


# Auxiliary Arm T4001854 with 3"-diameter mast & Epoxiglas® pole for ALTEC® trucks





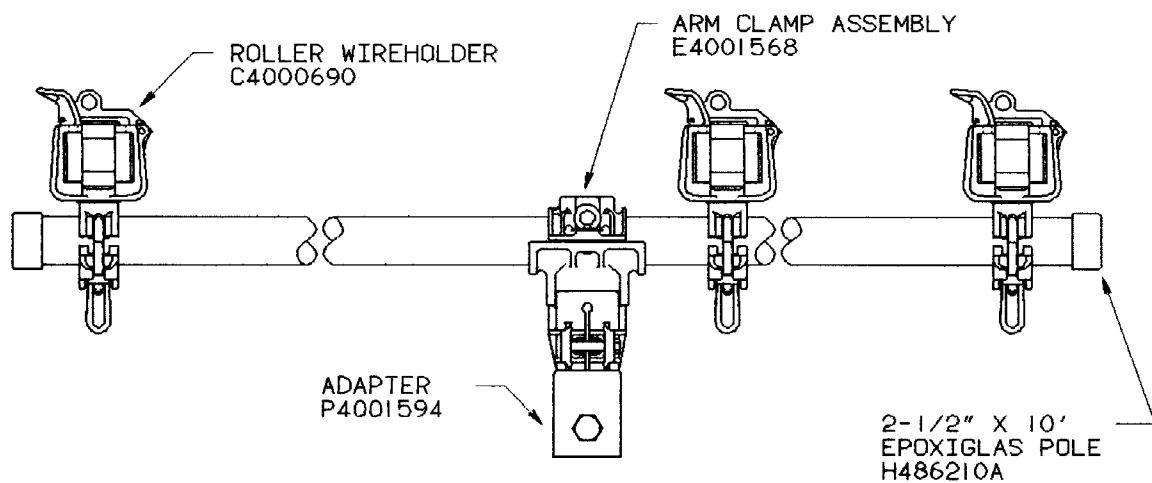
# Auxiliary Arm T4001855 with 3"-diameter mast & solid Epoxirod<sup>®</sup> pole for ALTEC<sup>®</sup> trucks



# Support Arms with fitting for 3"-diameter mast

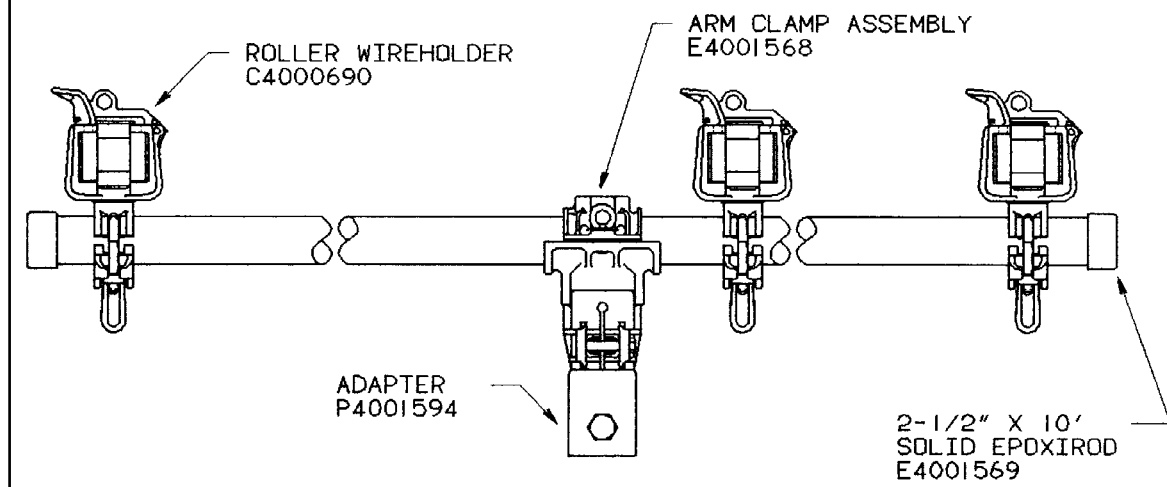
## T4001856

with Epoxiglas® pole as in T4001854 Auxiliary Arm for ALTEC® trucks

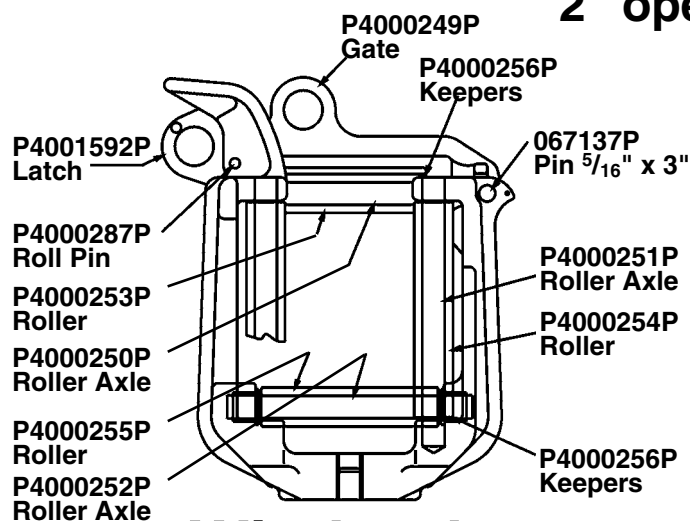


## T4001857

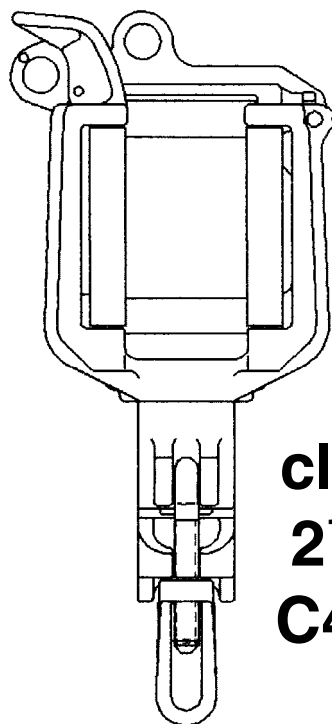
with solid Epoxirod® pole as in T4001855 Auxiliary Arm for ALTEC® trucks



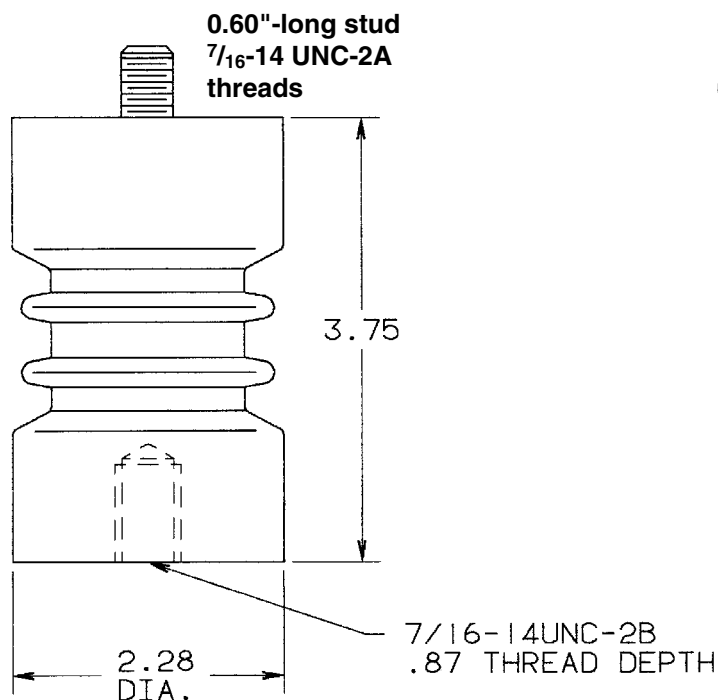
## Small Roller Wireholder 2" opening



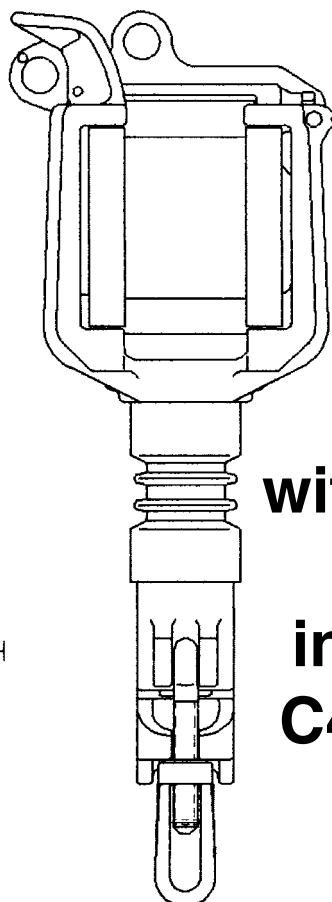
**Wireholder  
only  
C4000270**



**with  
clamp for  
2 $\frac{1}{2}$ " arm  
C4000268**

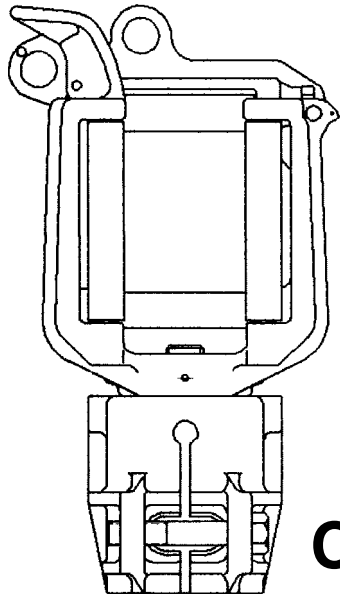


**Epoxy insulator  
M48057**

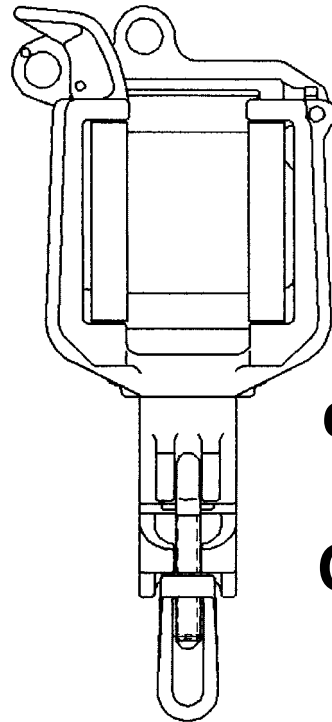


**with clamp  
&  
insulator  
C4000269**

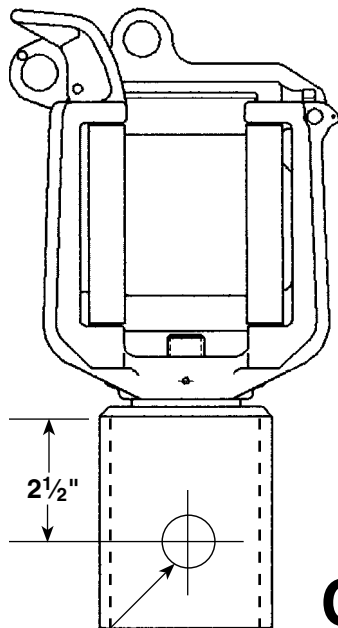
# Large Roller Wireholder 2 1/2" opening



**with  
Swivel  
Ferrule  
C4000747**

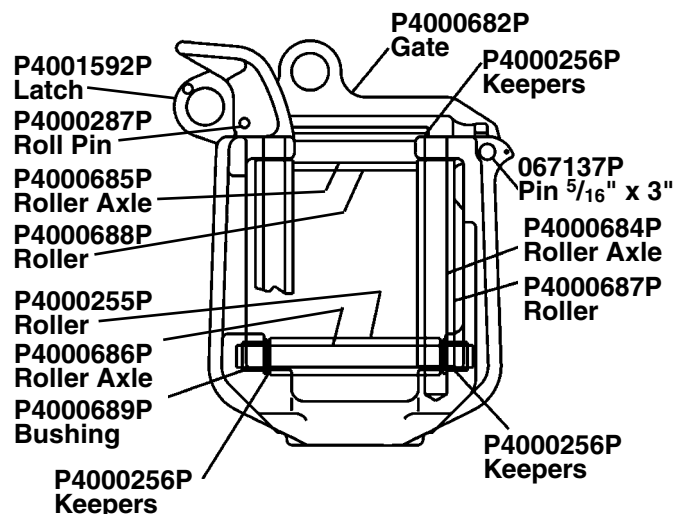


**with  
clamp for  
2 1/2" arm  
C4000690**



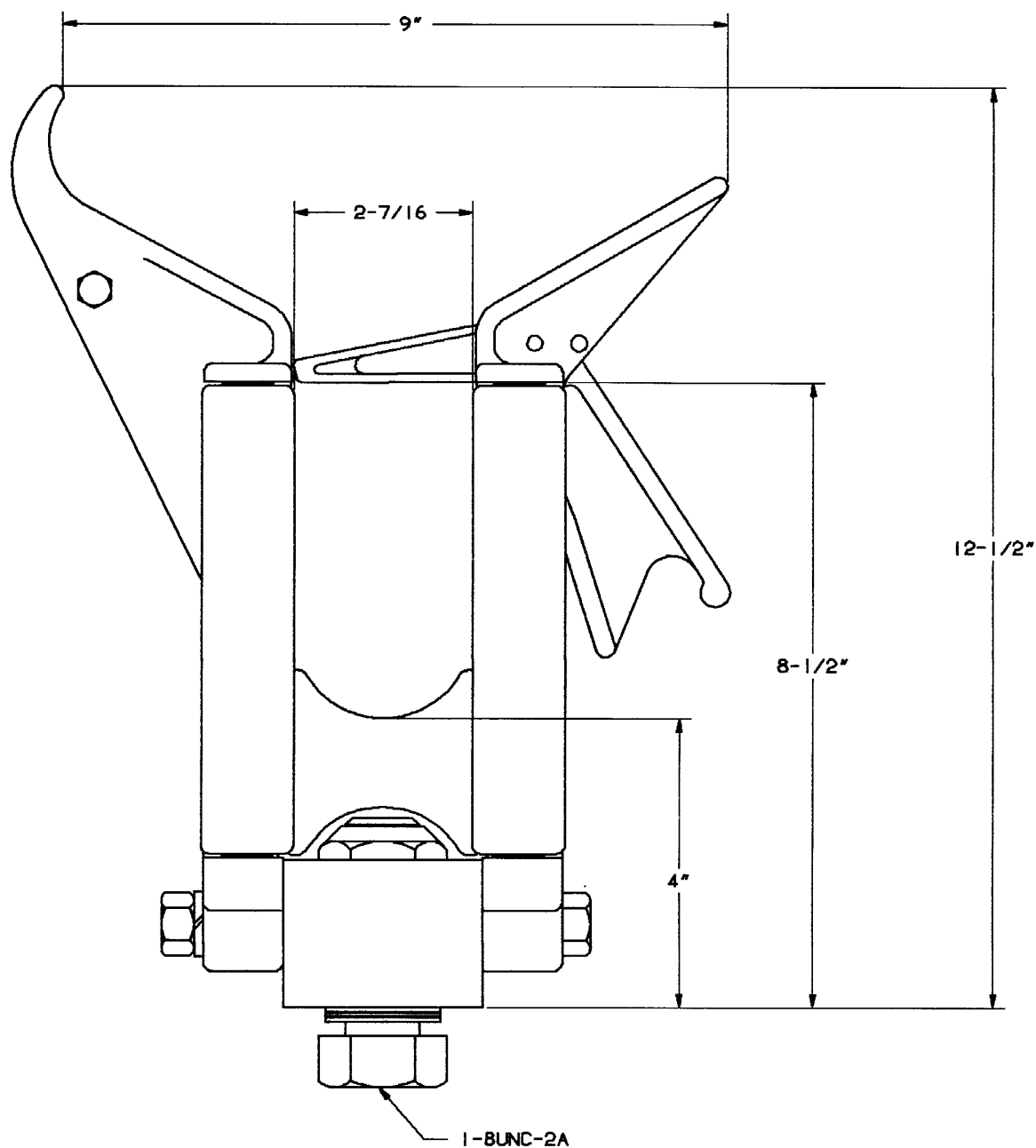
0.781" dia.

**for  
3"-dia.  
Jib  
C4001669**



**Wireholder  
only  
C4000691**

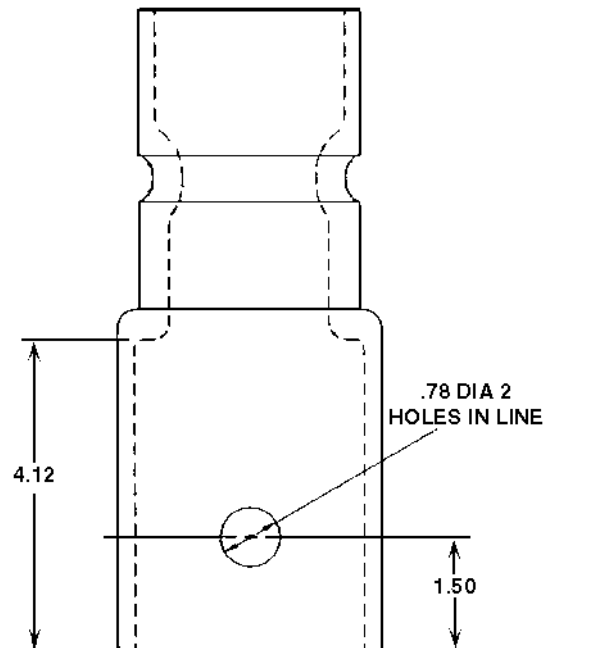
## Heavy-Duty Roller Wireholder



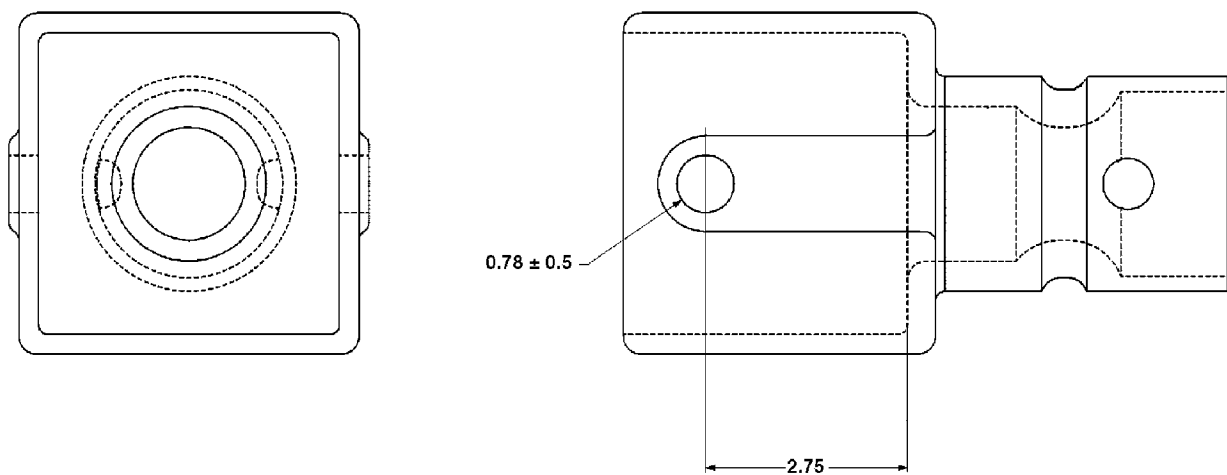
### M48061



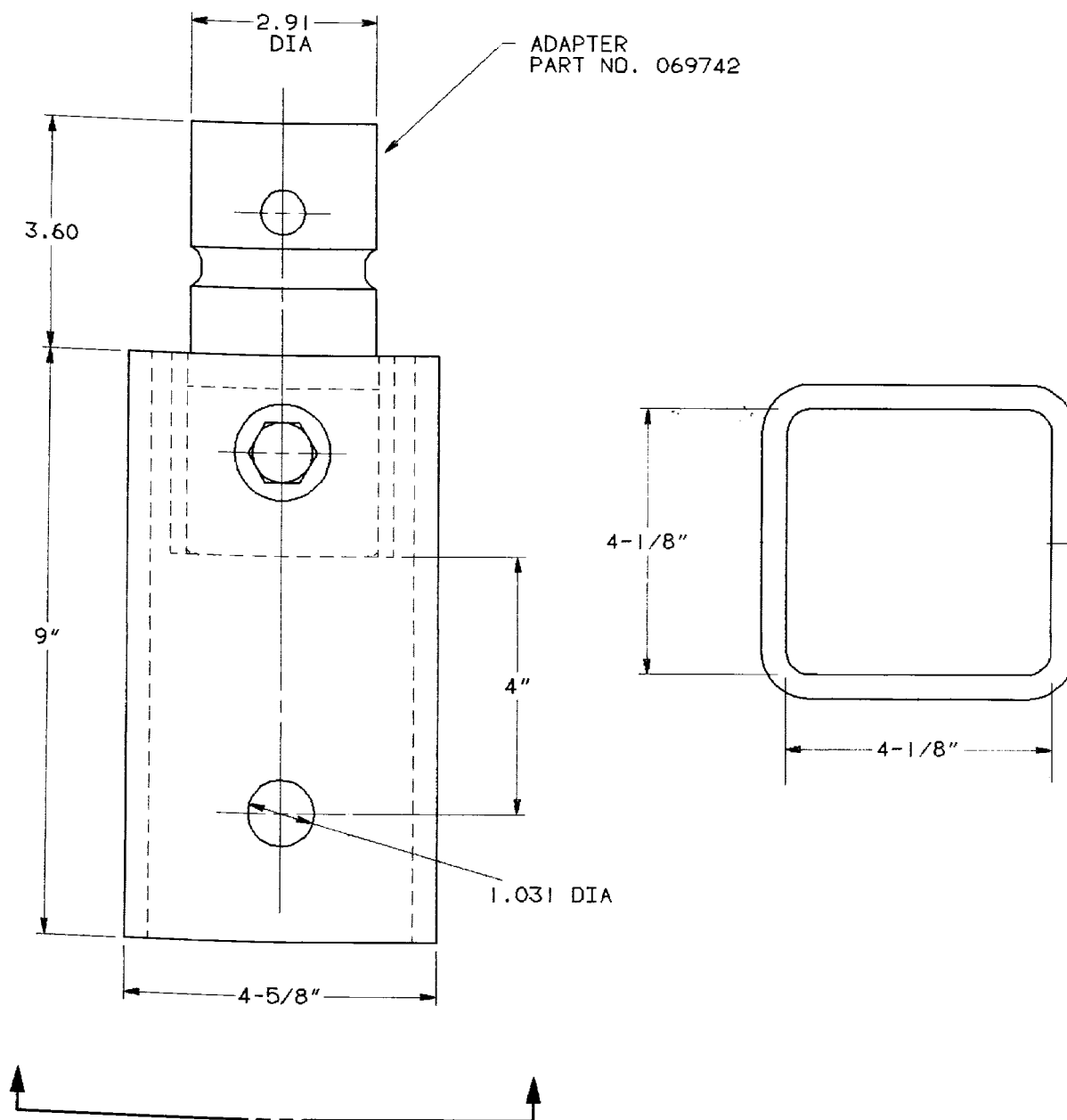
## ALTEC<sup>®</sup> Jib Adapter: 3" Round — P4001594P



## ALTEC<sup>®</sup> Jib Adapter: 4" x 4" Square — P4002536P



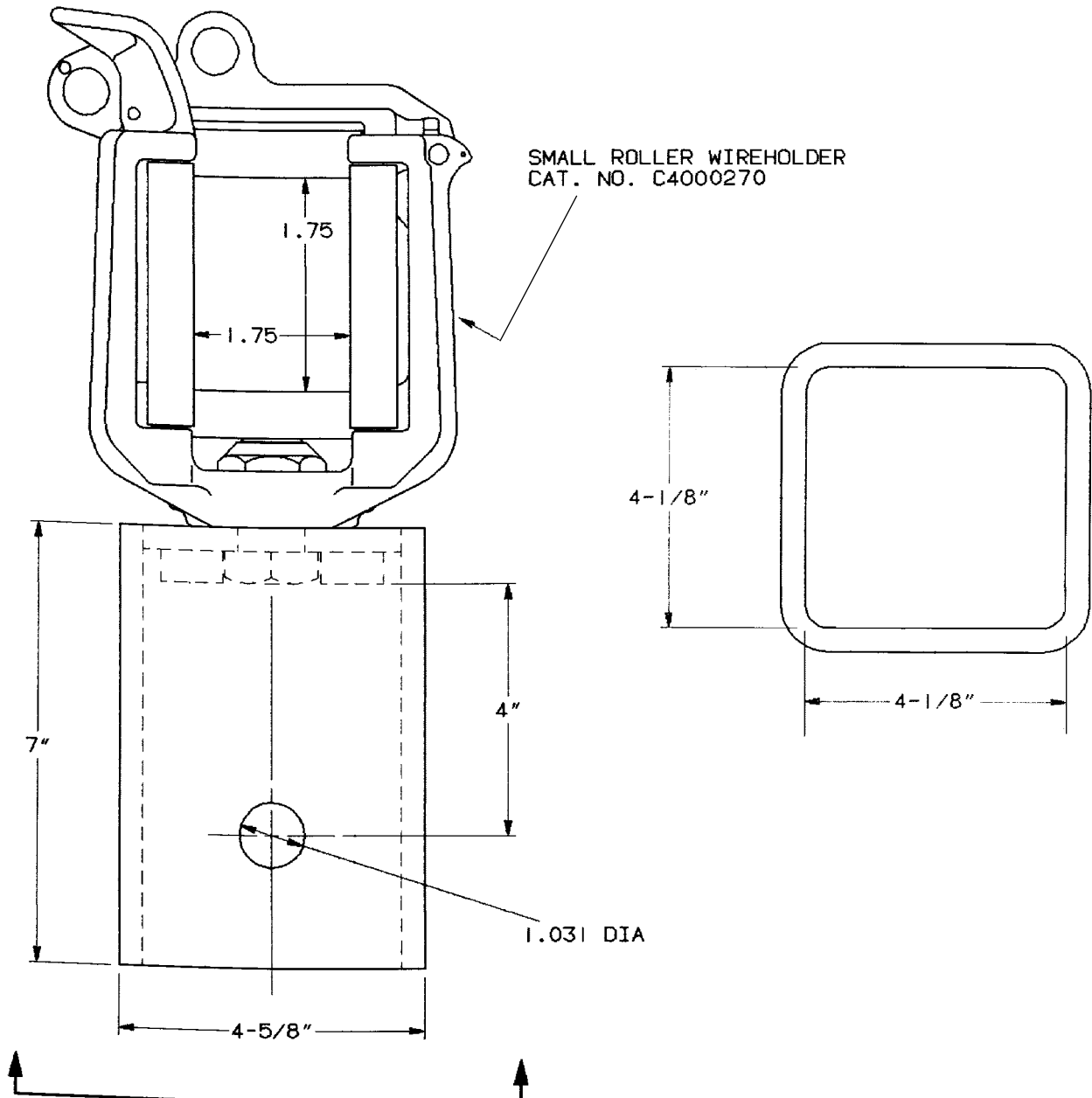
## Hi-Ranger Jib Adapter Cat. No. T4001932



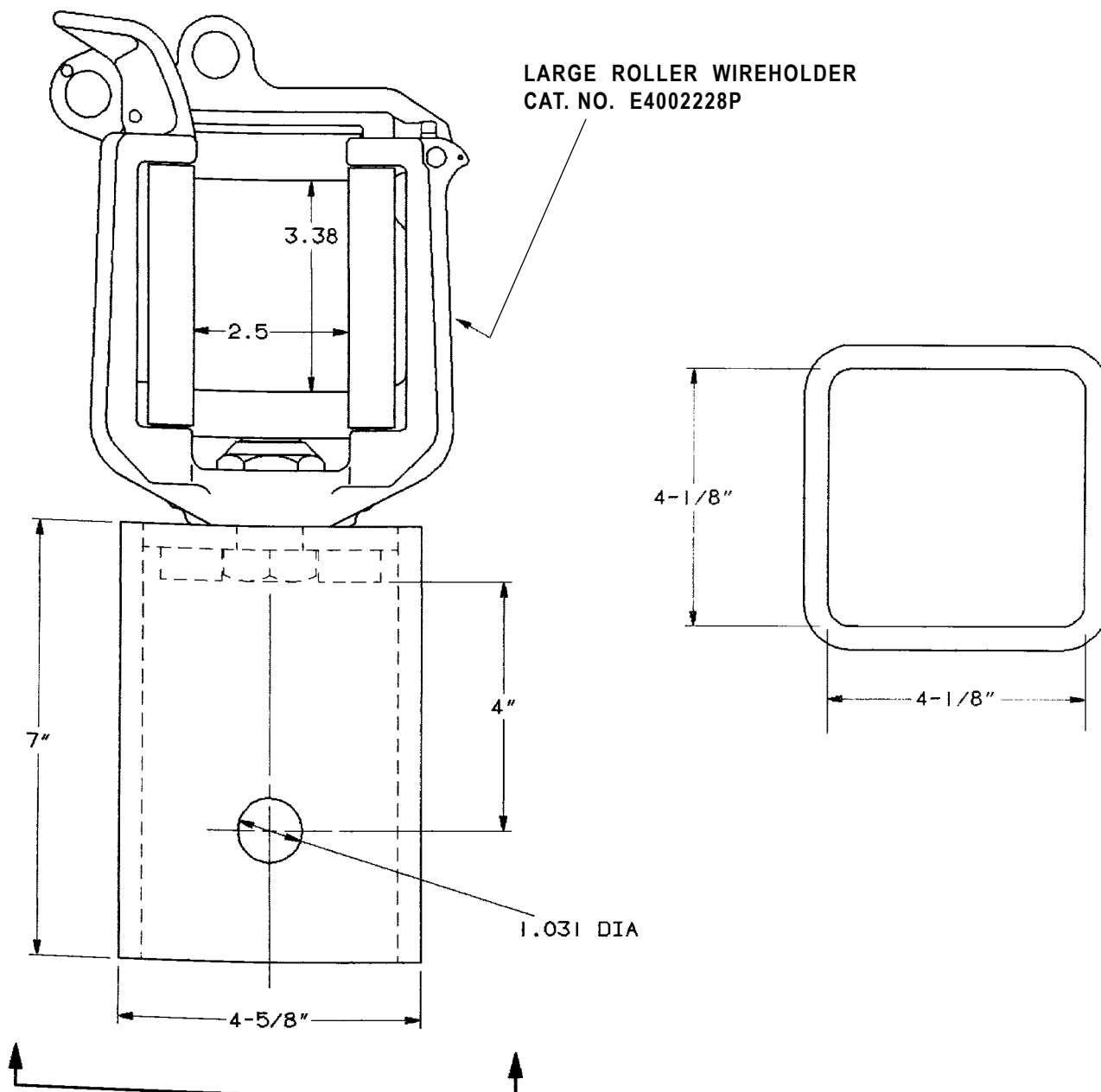
### FOR USE WITH CHANCE

T4001856	Support Arm	OEM 3.9
T4001857	Support Arm	OEM 3.9
C4000746	Rope Sheave Assembly	OEM 4.2
T4001658	Conductor	OEM 4.3
C4000747	Large Roller Wireholder	OEM 4.8

# Small Roller Wireholder with Hi-Ranger Adapter Cat. No. T4001931

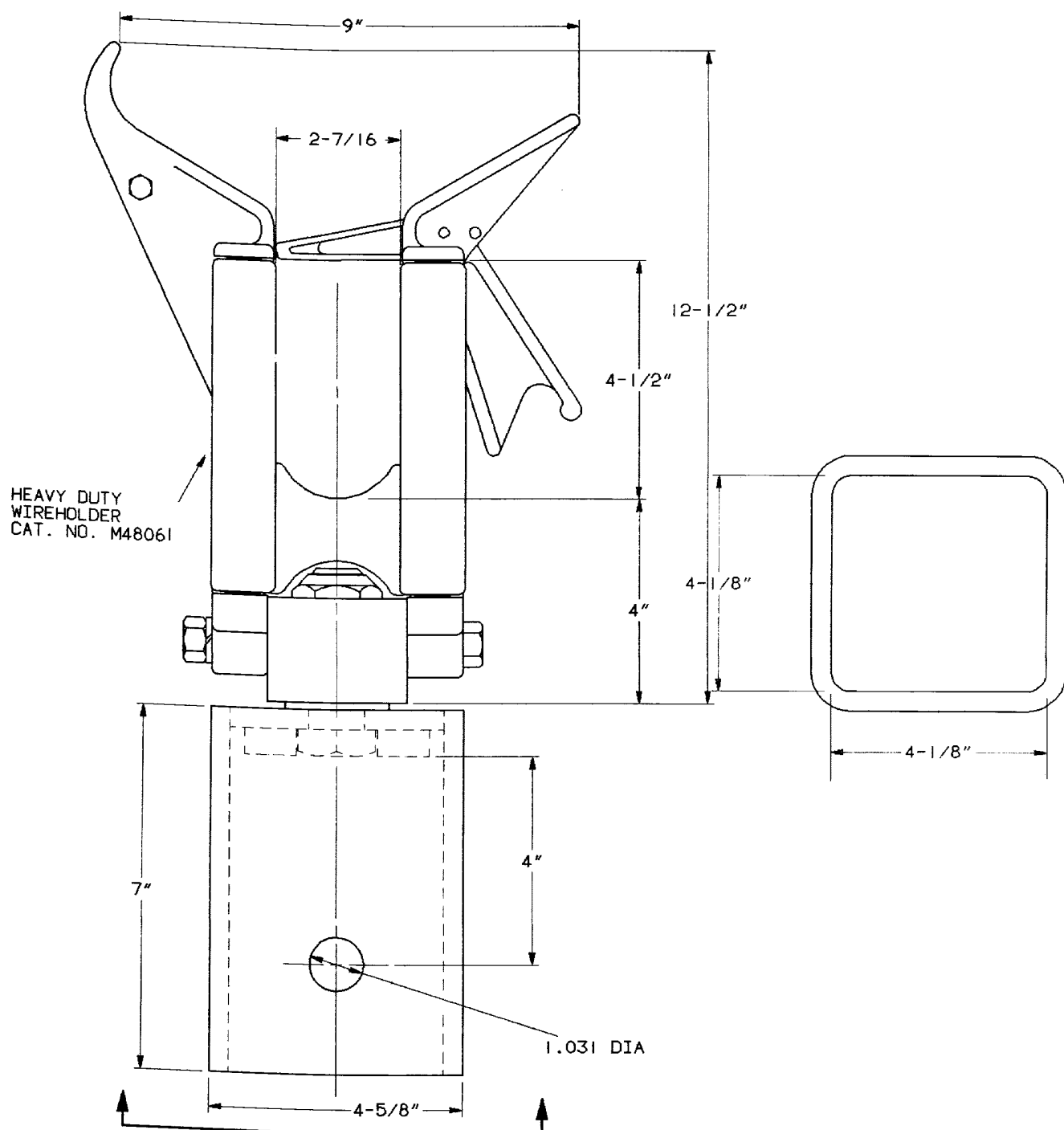


## Large Roller Wireholder with Hi-Ranger Adapter Cat. No. T4001929



Truck Accessories - 4150

# Heavy-Duty Roller Wireholder with Hi-Ranger Adapter Cat. No. T4001930

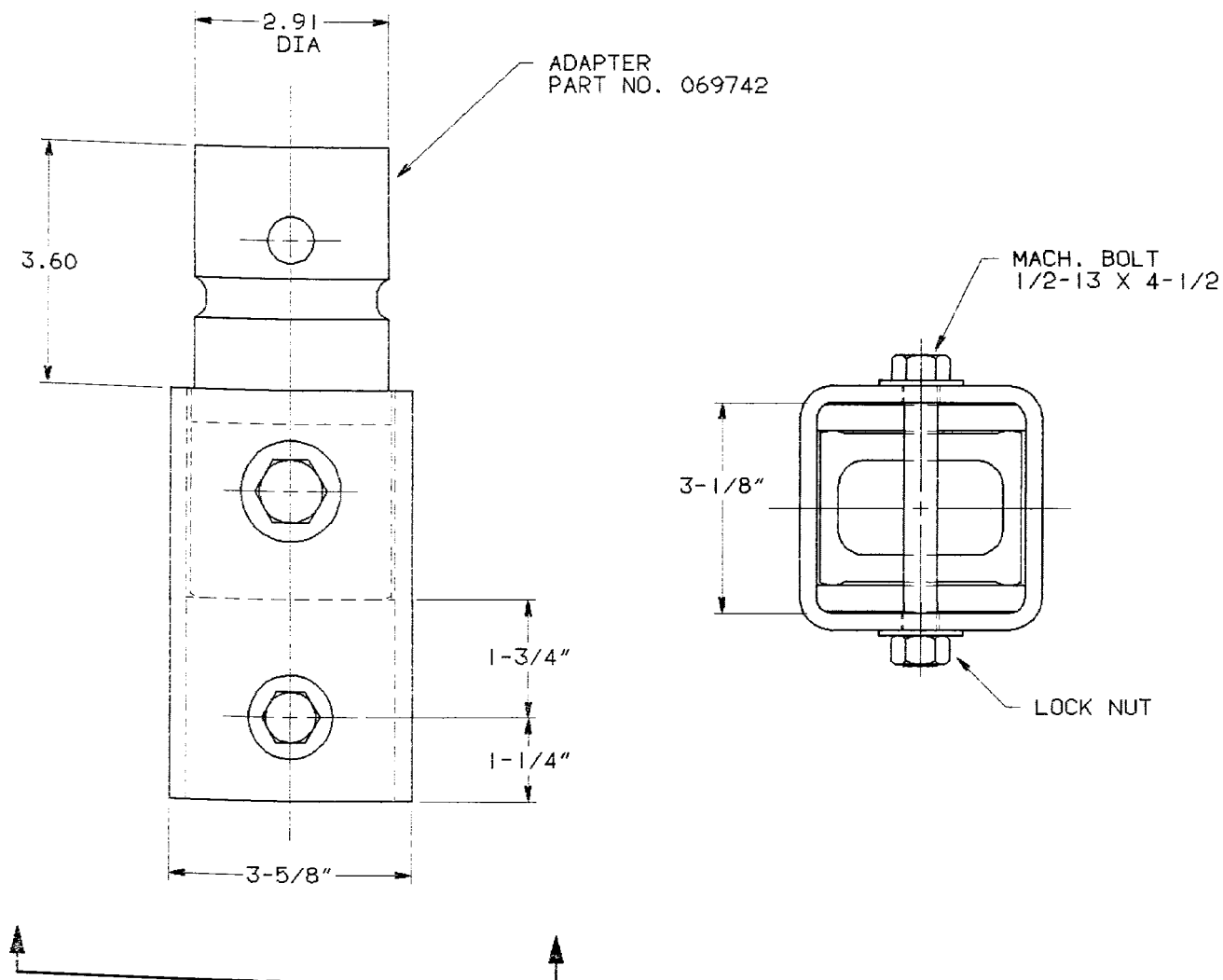


Truck Accessories - 4150



# Holan Jib Adapter

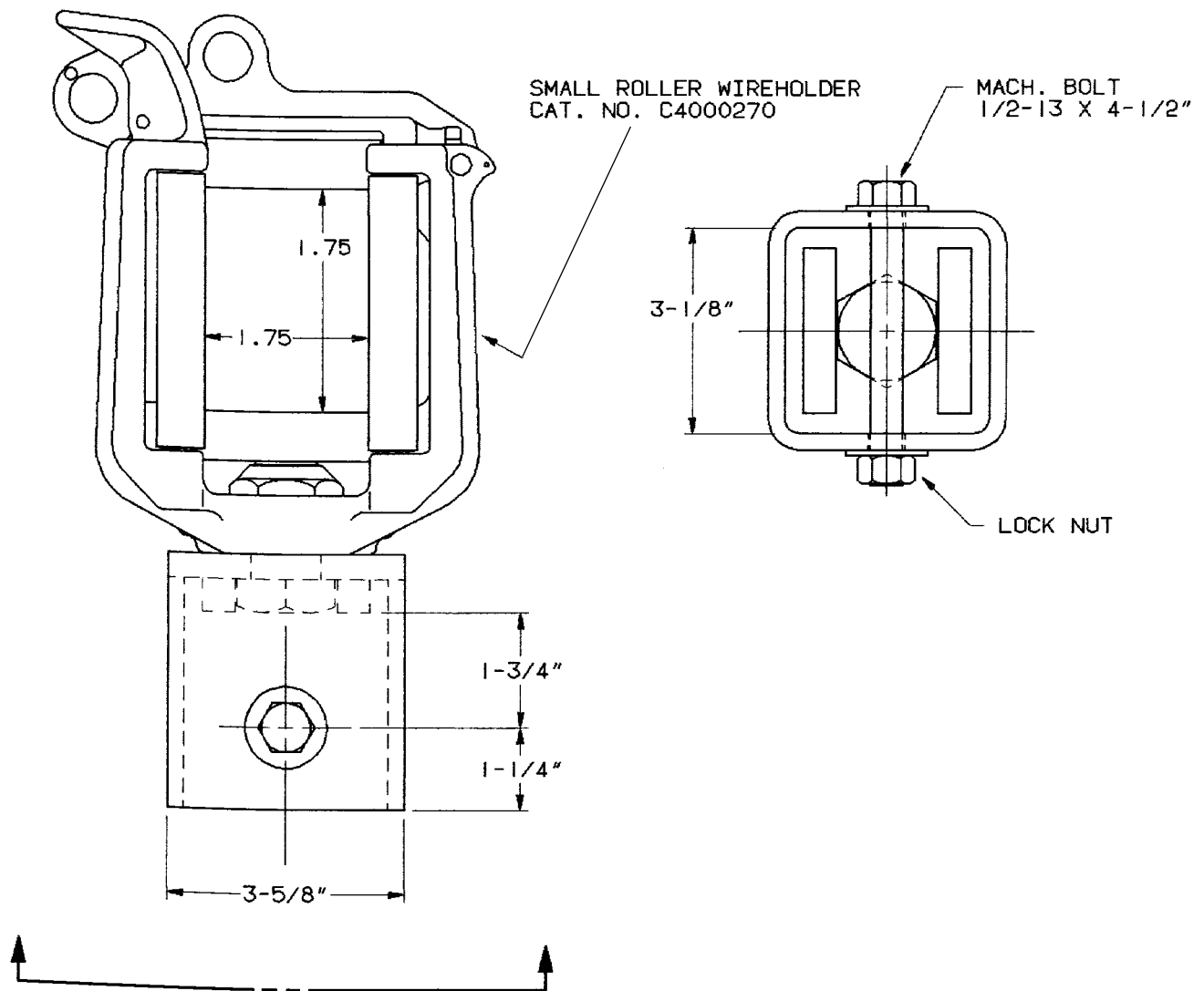
## Cat. No. T4001927



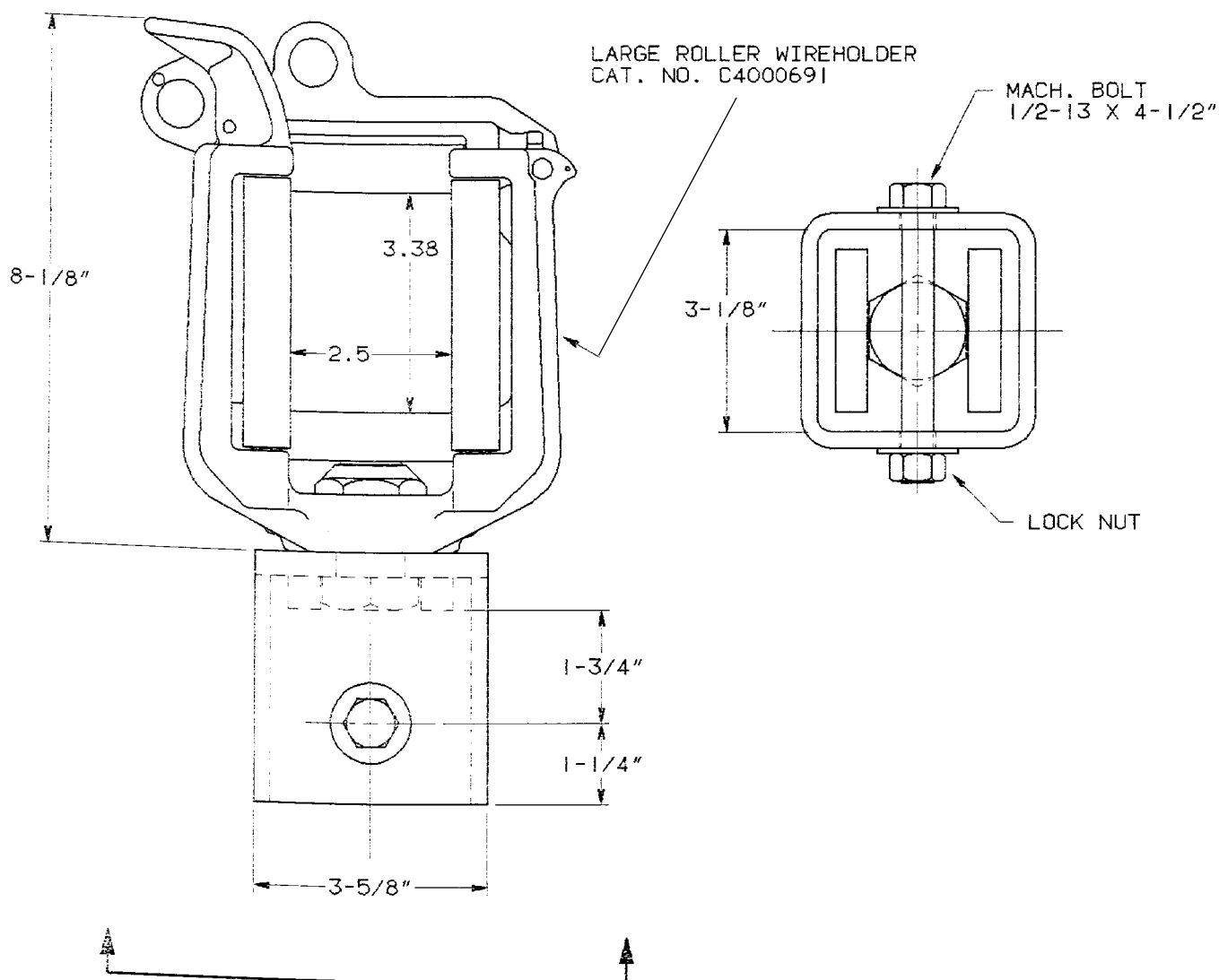
### FOR USE WITH CHANCE

T4001856	Support Arm	OEM 3.9
T4001857	Support Arm	OEM 3.9
C4000746	Rope Sheave Assembly	OEM 4.2
T4001658	Conductor	OEM 4.3
C4000747	Large Roller Wireholder	OEM 4.8

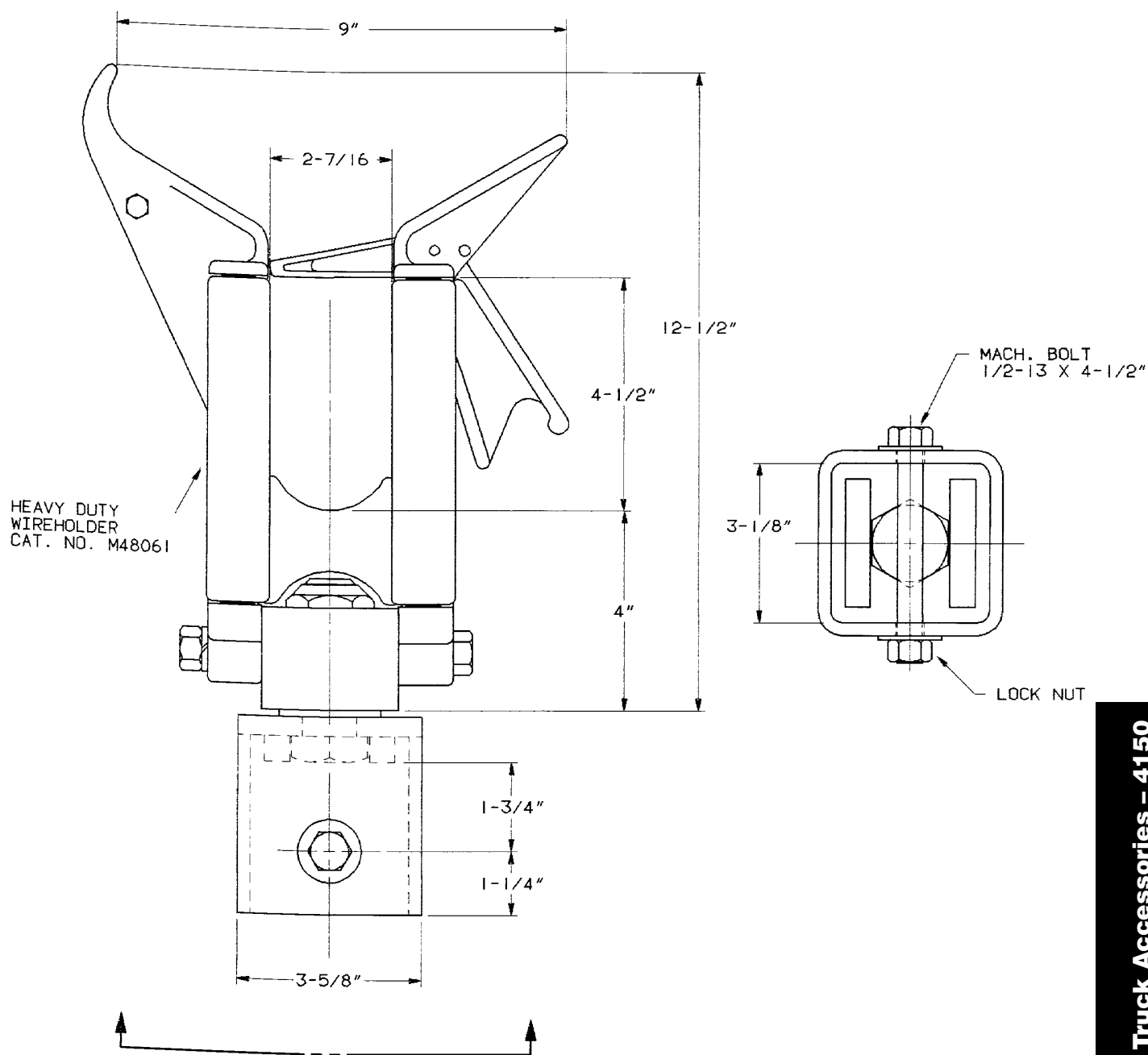
# **Small Roller Wireholder with Holan Adapter Cat. No. T4001945**



# Large Roller Wireholder with Holan Adapter Cat. No. T4001926

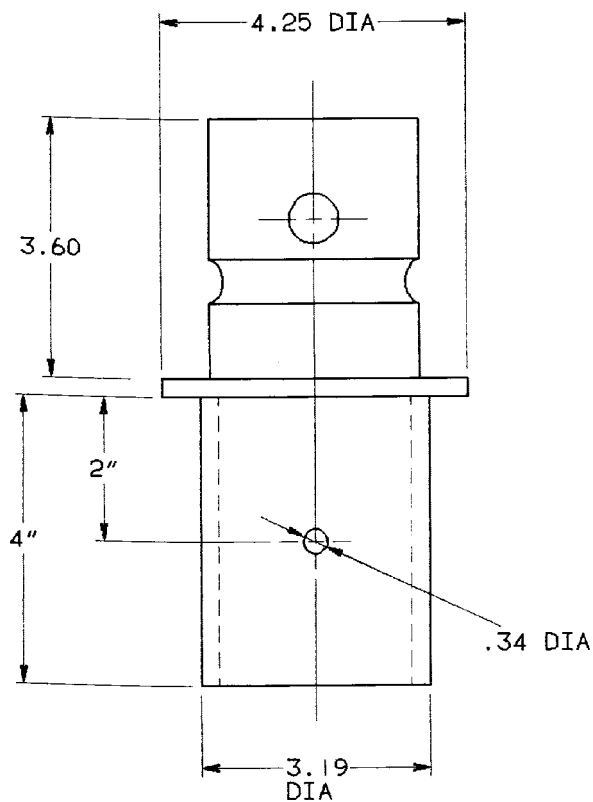


# Heavy-Duty Wireholder with Holan Adapter Cat. No. T4001912



Truck Accessories - 4150

## Telelect Jib Adapter Cat. No. T4001946

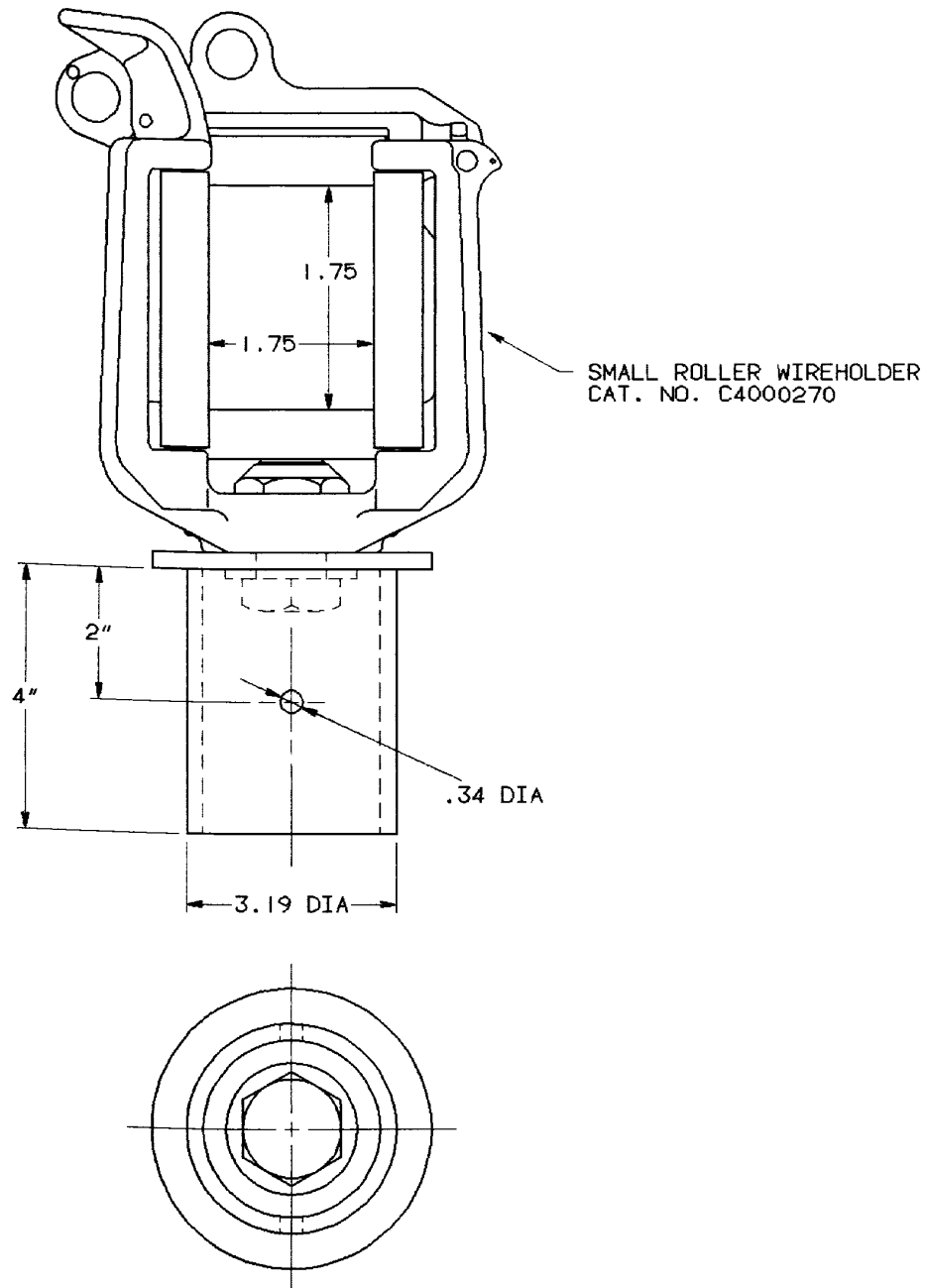


### FOR USE WITH CHANCE

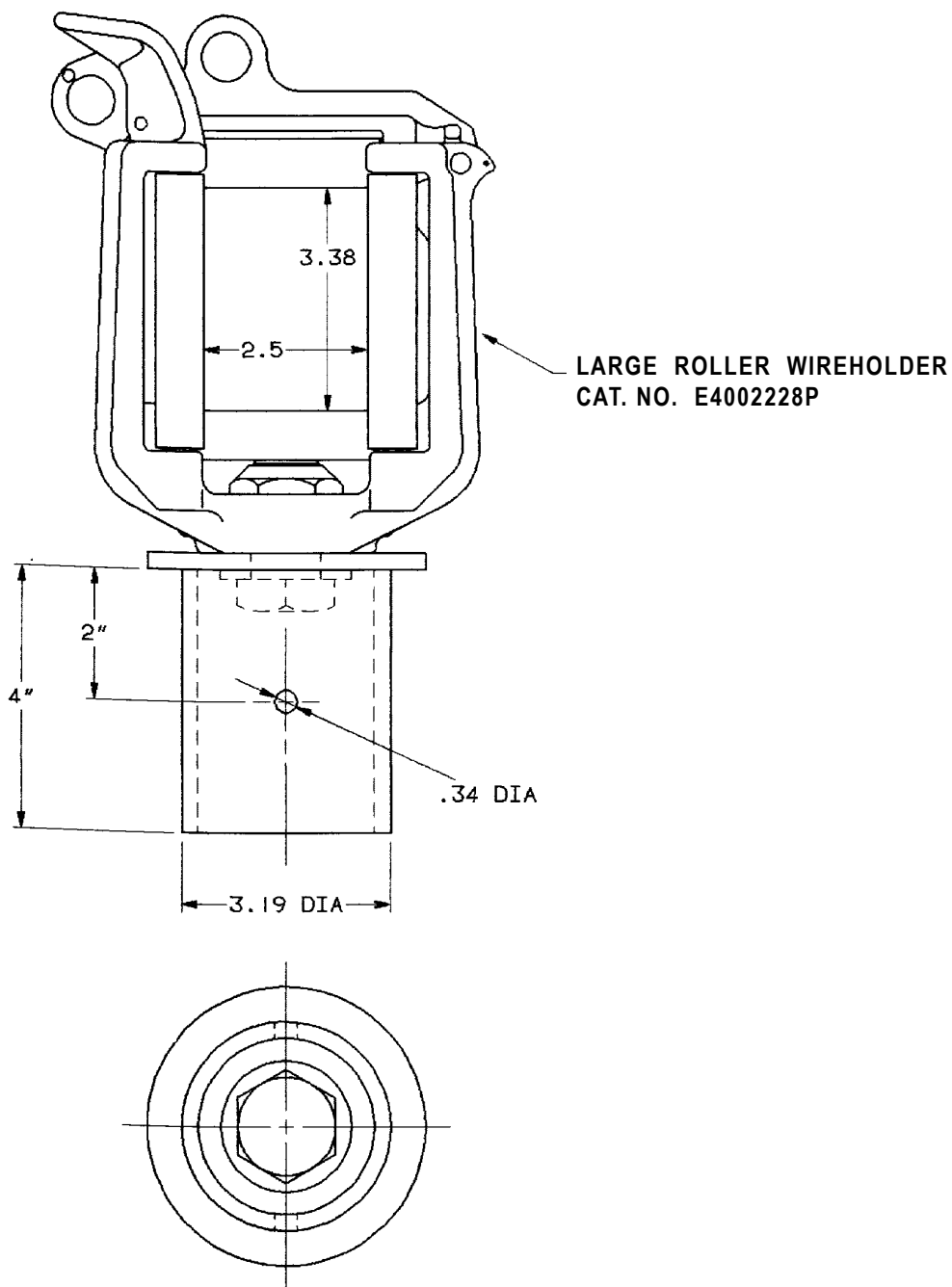
T4001856	Support Arm	OEM 3.9
T4001857	Support Arm	OEM 3.9
C4000746	Rope Sheave Assembly	OEM 4.2
T4001658	Conductor Hook	OEM 4.3
C4000747	Large Roller Wireholder	OEM 4.8



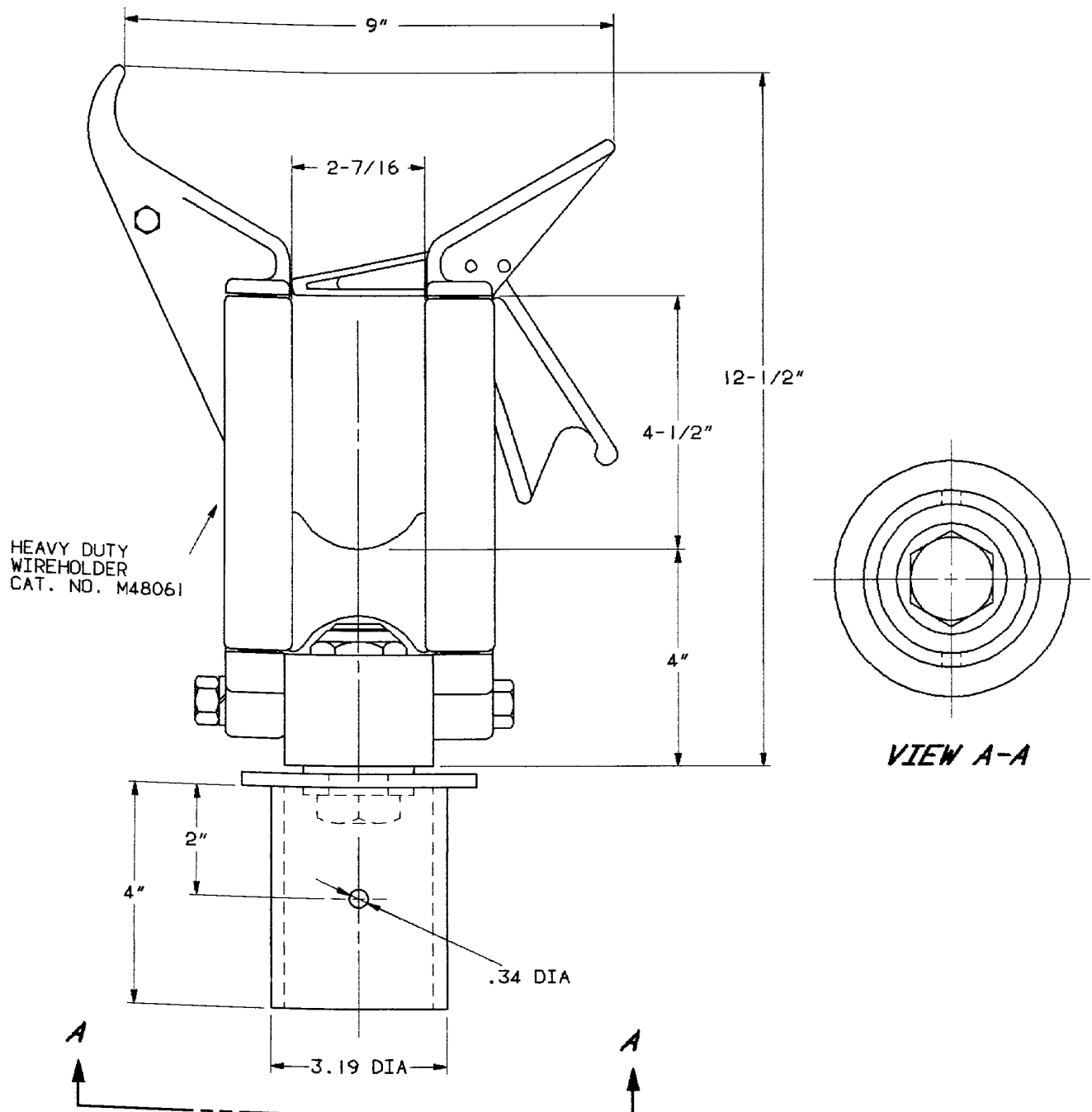
# **Small Roller Wireholder for Telelect Jib Cat. No. T4001941**



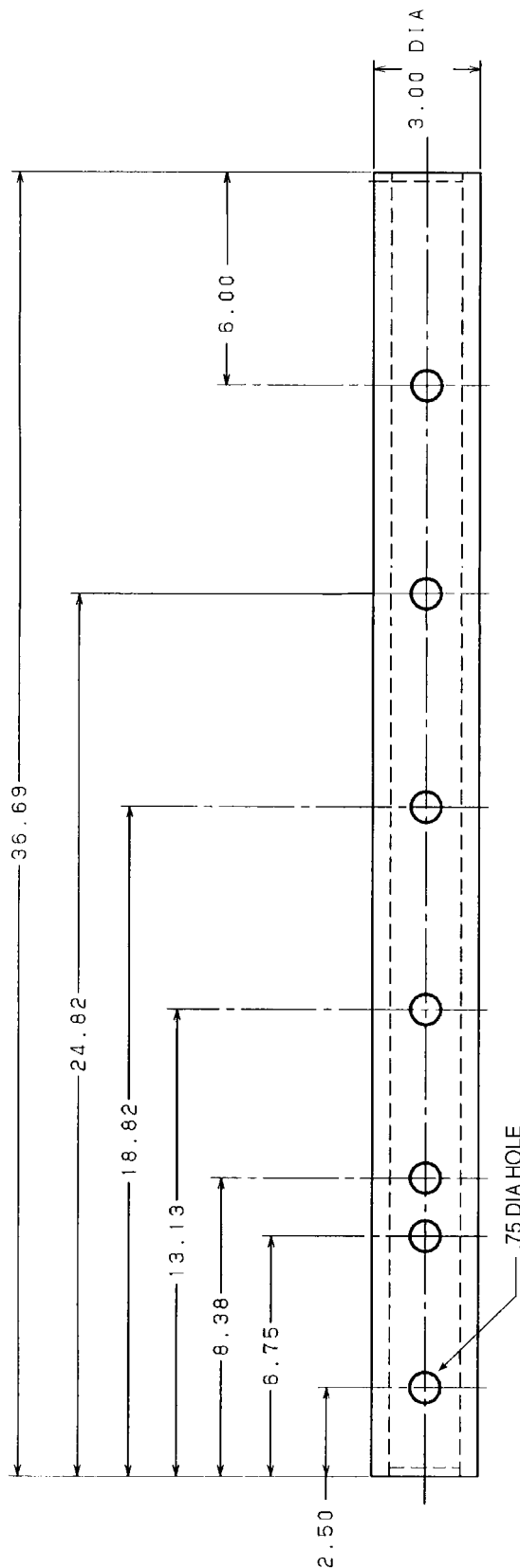
## Large Roller Wireholder for Telelect Jib Cat. No. T4001942



# Heavy-Duty Wireholder for Telelect Jib Cat. No. T4001943



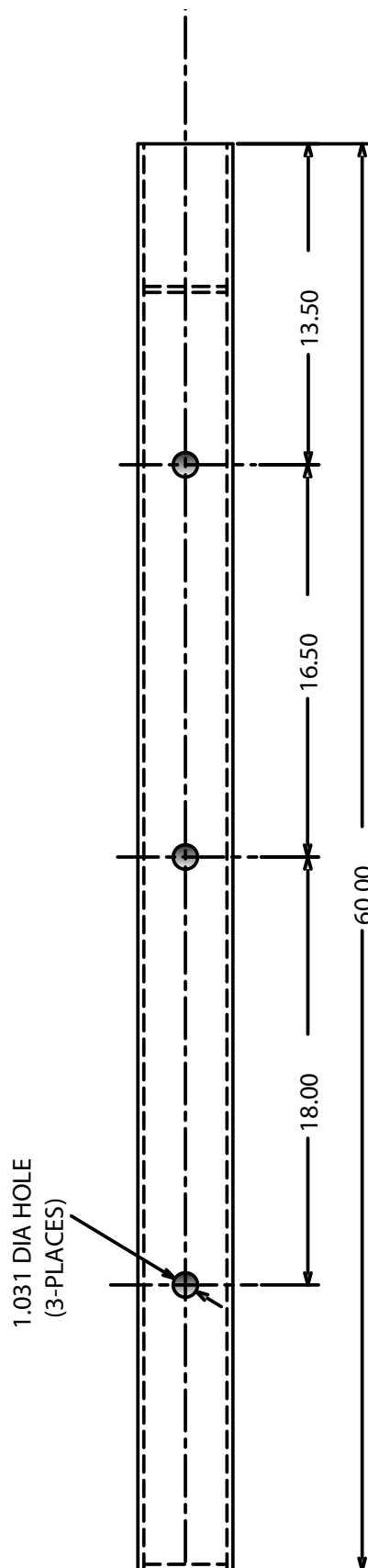
# **3"-diameter Jib T4001525 for ALTEC<sup>®</sup> trucks**



Truck Accessories – 4150



**4" x 4" Jib  
T4001764  
for HOLAN trucks**



**4" x 4" Jib  
T4001933  
for Reach-All trucks**

